

GOVERNMENT OF MAHARASHTRA

DETAILED ESTIMATE

Detailed Estimate for the Work of

Proposed Construction of Godown for Storage  
of Grain for Atulniya Farmers Producer  
Company Ltd. Waregaon Tq. Phulambri Dist.  
Aurangabad

Cost Rs. 1,12,05,953.00

JV Structural  
Engineers & Consultants

Aurangabad

Name of Work :- Proposed Construction of Godown for Storage of Grain for Atulniya Farmers Producer Company Ltd. Waregaon Tq. Phulambri Dist. Aurangabad

## Index

Sr.No.	Particulars	Page From	Page To
1	Fund Head Sheet		
2	General Report		
3	Recapitulation Sheet		
4	Abstract		
5	Measurements		
12	Rate Analysis		
13	Lead Chart		
14	Quarry Chart		
15	Trial pit		
16	Working Drawing		

Name of Work :- Proposed Construction of Godown for Storage of Grain for Atulniya  
Farmers Producer Company Ltd. Waregaon Tq. Phulambri Dist. Aurangabad

## Fund Head Sheet

OFFICE :  
SANCTIONED ESTIMATE NO.  
FUND HEAD :  
MAJOR HEAD  
MINOR HEAD :  
SERVICE HEAD :  
DEPARTMENTAL HEAD :

Estimate framed for the probable expenses that will be incurred for the work of  
**Proposed Construction of Godown for Storage of Grain for Atulniya Farmers  
Producer Company Ltd. Waregaon Tq. Phulambri Dist. Aurangabad**

Total Cost of work : 11205953.00

Administratively approved under  
No.

Estimate prepared by :

Estimate Checked by :

*GENERAL REPORT*

.....Attached Separately.....



  
JV Structural  
Engineers & Consultants  
Aurangabad

Name of Work :- Proposed Construction of Godown for Storage of Grain for Atulniya Farmers Producer Company Ltd. Waregaon Tq. Phulambri Dist. Aurangabad

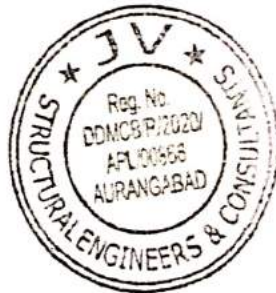
## General Report

Following provisions are made in the estimate.

- 1) RCC framed structure with open foundation. **(Conc. Grade M-20)**
- 2) Providing **soling using 80 mm size Below Flooring Only**
- 3) Providing and laying **P.C.C. M-10 for Flooring & M15 for Footing**
- 4) Providing **Fly Ash 230mm thick Brick Masonry** for all External Walls.
- 5) Providing **internal cement plaster 12mm thick** in single coat without neeru finish & **External Sand faced plaster.**
- 6) Providing and laying in situ cement concrete **M20 with tremix treatment for 100 mm thickness** for flooring with groove cutting of 4mm wide and 20mm deep for godown floor
- 7) Providing and applying **washable oil-bound distemper in 2 coats for Internal Walls**
- 8) Providing and applying **three coats of Waterproof cement paint** for External Walls
- 9) Providing **Rolling Shutter** for Godown Entrance.
- 10) Providing and fixing of **colour coated Zinc aluminium Sheet** are Provided
- 11) Providing and fixing **22 B.W.G. plain galvanised iron sheets** Over Canopy

The rates are adopted as per State -E- SSR 2022-23 and nearest quarry is adopted for material.

So early technical sanction of the estimate is requested please.

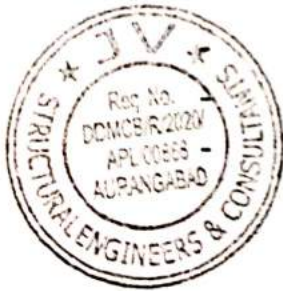



  
JV Structural  
Engineers & Consultants  
Aurangabad

Name of Work :- Proposed Construction of Godown for Storage of Grain for  
Atulniya Farmers Producer Company Ltd. Waregaon Tq. Phulambri Dist.  
Aurangabad

**Recapitulation Sheet**

Sr. No.	Perticulars	Amount As per Estimate
1	Cost of Proper Building	82,74,208.00
2	Cost of Internal B.T. Road (140 Rgm - 9.00m Wide)	11,53,146.00
3	Add 1% for Labour Insurance	82,742.00
4	Add 18% for G.S.T. Charges	14,89,357.00
5	Add For Electrification.	2,06,500.00
<b>Total Cost of Construction</b>		<b>1,12,05,953.00</b>



  
JV Structural  
Engineers & Consultants  
Aurangabad

Abstract

Name of Work :- Proposed Construction of Godown for Storage of Grain for Atulniya Farmers Producer Company Ltd. Waregaon Tq. Phulambri Dist. Aurangabad

Abstract Sheet

Item No.	Item Of Work.	Qty.	Rate	Unit	Amount
<b>Excavation</b>					
1	Excavation for foundation in earth, soil of all types, sand, gravel and soft murum, including removing the excavated material up to a distance of 50 m. beyond the building area and stacking and spreading as directed, dewatering, preparing the bed for the foundation and necessary back filling, ramming, watering including shoring and strutting etc. complete. (Lift upto 1.5 m.) By Mechanical Means. Bd.A.1 Page 1 Number 259. SSR I.No. 21.02, Sr.No.721, P.No.153				
	<b>Ground Floor</b>	55.400	207.00	Cum	11468.00
2	Excavation for foundation in hard murum including removing the excavated material upto distance of 50 metres beyond the building area and stacking and spreading as directed, dewatering, preparing the bed for the foundation and necessary back filling, ramming, watering including shoring and strutting etc. complete. (Lift upto 1.50 m) By Mechanical Means Spec.No.: Bd.A.2 Page 1 Number 259 SSR I.No.21.06, Sr.No.725 P.No.153				
	<b>Ground Floor</b>	41.660	227.00	Cum	9457.00
3	Excavation for foundation in hard murum and boulders including removing the excavated material up to a distance 50 metres, beyond the building area and stacking and spreading as directed, dewatering, preparing the bed for the foundation and necessary back filling, ramming, watering including shoring and strutting etc. complete. (Lift upto 1.5m.) By Mechanical Means Spec. No. Bd.A.3 Page Number 259. SSR I.No. 21.10, Sr.No.728, P.No.154				
	<b>Ground Floor</b>	20.840	252.00	Cum	5252.00
4	Filling in plinth and floors with contractors material/brought from outside and approved by Engineer incharge in layers of 15 cm to 20 cm including watering and compaction etc. complete.. Spec. No. Bd.A.11 Page 1 Number 263. SSR I.No. 21.37, Sr.No. 751, P.No. 157				
	<b>Ground Floor</b>	256.900	818.98	Cum	210396.00
5	Providing soling using 80 mm size trap metal in 15 cm. layer including filling voids with Crushed sand/grit, ramming, watering etc. complete.. Spec. No. As directed by Engineer in charge. SSR I.No. 21.40, Sr.No. 754, P.No. 157				
	<b>Ground Floor</b>	103.070	2034.01	Cum	209645.00
<b>Structural Steel Work</b>					
6	Providing structural steel work in trusses, other similar trussed purlins and members with all bracing, gusset plates etc. as per detailed designs and drawings or as directed including cutting, fabricating, hoisting, erecting fixing in position, Making riveted/ bolted/ welded connection and one coat of anticorrosive paint and over it 2 coats of oil painting approved quality and shade etc. complete. Spec. No. Bd.C.2 Page Number 275 SSR I.No.23.04, Sr.No.819, P.No.173				
	<b>Ground Floor</b>	23.000	119459.00	M.T	2747557.00

Abstract

Item No.	Item Of Work.	Qty.	Rate	Unit	Amount
<b>Plain Cement Concrete</b>					
7	Providing and laying Cast in situ/Ready Mix cement concrete in M-10 of trap/ granite/ quartzite/ gneiss metal for foundation and bedding including bailing out water, Steel centering, formwork, laying/pumping, compacting, roughening them if special finish is to be provided, finishing if required and curing complete, with fully automatic micro processor based PLC with SCADA enabled reversible Drum Type mixer/concrete Batch mix plant (Pan mixer) etc. complete. With fine aggregate (Crushed sand VSI Grade) Spec. No. Bd.E.1 Page 1 No. 287.SSR I.No.24.01, Sr.No.827, P.No.175				
	<b>Ground Floor</b>	<b>68.720</b>	<b>5773.12</b>	<b>Cum</b>	<b>396729.00</b>
8	Providing and laying Cast in situ/Ready Mix cement concrete in M15 of trap/ granite/quartzite/gneiss metal for bed blocks, foundation blocks and such other items including bailing out water, Steel centering, formwork, laying/ pumping, compacting, roughening them if special finish is to be provided, finishing uneven and honeycombed surface and curing etc. complete. The Cement Mortar 1:3 plaster is considered for rendering uneven and honeycombed surface only. Newly laid concrete shall be covered by gunny bag, plastic, tarpaulin etc. (Wooden centering will not be allowed.), with fully automatic micro processor based PLC with SCADA enabled reversible Drum Type mixer/ concrete Batch mix plant (Pan mixer) etc. complete. With fine aggregate (Crushed sand VSI Grade) Sepe. No. Bd.E.4 Page Number 289 and B7, Page Number38. SSR I.No. 24.08, Sr.No. 830, P.176				
	<b>Ground Floor</b>	<b>10.420</b>	<b>6221.81</b>	<b>Cum</b>	<b>64831.00</b>
9	Providing and laying in situ cement concrete M20 with tremix treatment for 100 mm thickness for flooring with groove cutting of 4mm wide and 20mm deep with necessary refilling with bitumen etc. complete. Sepe. No. As directed by Engineer in charge. SSR I.No. 33.30, Sr.No. 1017, P.216				
	<b>Ground Floor</b>	<b>626.750</b>	<b>1283.40</b>	<b>Sqm</b>	<b>804371.00</b>
10	Providing and laying in situ /Ready Mix cement concrete M-20 of trap / granite /quartzite/ gneiss metal for R.C.C. work in foundations like raft, strip foundations, grillage and footings of R.C.C. columns and steel stanchions etc. including bailing out water, Steel centering formwork, laying/pumping cover blocks, compaction and curing roughening the surface if special finish is to be provided (Excluding reinforcement and structural steel) etc. complete, with fully automatic micro processor based PLC with SCADA enabled reversible Drum Type mixer/ concrete Batch mix plant (Pan mixer) etc. complete. With fine aggregate (Crushed sand VSI Grade) Spec. No.Bd.F.3 Page 1 No. 298 and B.7, Page No.38. SSR I.No.25.11, Sr.No.836 P.No.178				
	<b>Ground Floor</b>	<b>27.800</b>	<b>6881.00</b>	<b>Cum</b>	<b>191292.00</b>
11	Providing and laying Cast in situ/Ready Mix cement concrete M-20 of trap / granite /quartzite/ gneiss metal for R.C.C. columns as per detailed designs and drawing or as directed including steel centering, formwork, cover blocks, laying/pumping, compaction finishing the formed surfaces with cement mortar 1:3 of sufficient minimum thickness to give a smooth and even surface or roughening if special finish is to be provided and curing etc. complete.(Excluding reinforcement and structural steel).with fully automatic micro processor based PLC with SCADA enabled reversible Drum Type mixer/ concrete Batch mix plant (Pan mixer) etc. complete. With fine aggregate (Crushed sand VSI Grade) Spec. No. : Bd.F.5 Page No. 300 and B.7, Page.No. 38.SSR I.No.25.31, Sr.No.841, P.No.179				
	<b>Ground Floor</b>	<b>14.550</b>	<b>12892.10</b>	<b>Cum</b>	<b>187580.00</b>

Abstract

Item No.	Item Of Work.	Qty.	Rate	Unit	Amount
12	Providing and laying Cast in situ/Ready Mix cement concrete M-20 of trap / granite /quartzite/ gneiss metal for R.C.C. beams and lintels as per detailed designs and drawings or as directed including steel centering, formwork, cover blocks, laying/pumping, compactionand roughening the surface if special finish is to be provided and curing etc. complete. (Excluding reinforcement and structural steel). with fully automatic micro processor based PLC with SCADA enabled reversible Drum Type mixer/ concrete Batch mix plant (Pan mixer) etc. complete. With fine aggregate (Crushed sand VSI Grade) Spec. No. :Bd.F.6 Page Number 300 and B.7, Page 1 Number38 Page.No. 38.SSR I.No.25.50, Sr.No.846, P.No.181				
	<b>Ground Floor</b>	12.760	11529.50	Cum	147116.00
13	Providing and fixing in position TMT - FE - 500 bar reinforcement of various diameters for R.C.C. pile caps, footings, foundations, slabs, beams columns, canopies, staircase, newels, chajjas, lintels pardis, copings, fins, arches etc. as per detailed designs, drawings and schedules. including cutting, bending, hooking the bars, binding with wires or tack welding and supporting as required complete.. Spec.No. Bd.F.17, Page 1 No. 306. SSR I.No.26.33, Sr.No.871, P.No.188				
	<b>Ground Floor</b>	6.440	89703.00	MT	577687.00
	<b>Brick Work</b>				
14	Providing fly ash brick masonry with conventional / I.S. type fly ash bricks in C.M. 1:6 in foundation and plinth including bailing out water manually striking joints, racking out joints watering and scaffolding etc. complete..Spec. No. As director by engineer in charge and BDG- 2 and 5. SSR I.No.27.12, Sr.No.899 P.No.198				
	<b>Ground Floor</b>	15.650	7542.97	Cum	118047.00
15	Providing fly ash brick masonry with conventional/ I.S. type bricks in cement mortar 1:6 in superstructure including striking joints, raking out joints, watering and scaffolding etc. Complete. Spec. No. As director by engineer incharge and BDG- 2 and 5. SSR I.No.27.13, Sr.No.900 P.No.198				
	<b>Ground Floor</b>	22.230	7764.97	Cum	172615.00
	<b>Plastering &amp; Pointing</b>				
16	Providing internal cement plaster 12mm thick in single coat in cement mortar 1:5 without neeru finish to concrete or brick surfaces, in all positions including scaffolding and curing etc. complete Spec. No. : Bd.L.4 Page 1 No. 368. SSR I.No.32.03, Sr.No.957, P.No.209				
	<b>Ground Floor</b>	113.000	274.95	Sqm	31069.00
17	Providing sand faced plaster externally in cement mortar using approved screened sand, in all positions including base coat of 15 mm thick in cement mortar 1:4 using waterproofing compound at 1Kilogramper cement bag curing the same for not less than 2 days and keeping the surface of the base coat rough to receive the sand faced treatment 6 to 8 mm thick in cement mortar 1:4 finishing the surface by taking out grains and curing for fourteen days scaffolding etc.complete. Spec. No. : Bd.L.7 Page 1 No. 369. SSR I.No.32.11, Sr.No.963, P.No.209				
	<b>Ground Floor</b>	190.800	647.69	Sqm	123579.00
	<b>Paving, Flooring &amp; Dado</b>				
18	Providing and laying machine cut machine Polished Kota stone flooring 25mm to 30mm thick and required width in plain/ diamond pattern on bed of 1:6 C. M. including cement float, filling joints with neat cement slurry, curing, polishing and cleaning etc. complete.. Spec. No. Bd.M.3 Page 1 No.380.SSR I.No.33.06, Sr.No.993 P.No.213				
	<b>Ground Floor</b>	54.400	1252.79	Sqm	68152.00

## Abstract

Item No.	Item Of Work.	Qty.	Rate	Unit	Amount
19	Providing and laying machine cut machine polished machine cut Kota stone slabs 20 to 25 mm thick for treads and risers of steps and staircases, with rounded nosing for the treads on a bed of 1:4 cement mortar including cement float, filling joints with neat cement slurry, curing, polishing and cleaning etc. complete.. Spec No.:As directed by Engineer in charge. SSR I.No.33.18, Sr.No.1005, P.214				
	<b>Ground Floor</b>	<b>12.000</b>	<b>1577.26</b>	<b>Sqm</b>	<b>18927.00</b>
20	Providing and laying chequered tiles of approved quality of size 30 cm x 30 cm, confirming to corresponding I.S. for flooring in required position laid on a bed of 1:4 cement mortar including cement float, filling joint with cement slurry cleaning curing etc. complete.. Spec No.:Bd. M-12 page Number 385. SSR I.No.33.66, Sr.No.1050, P.220				
	<b>Ground Floor</b>	<b>6.000</b>	<b>740.26</b>	<b>Sqm</b>	<b>4442.00</b>
	<b>Oil Painting</b>				
21	Providing and applying 2 coats of 100% Pure acrylic low VOC and APEO & HCHO free water based paint of approved colour that belongs to class 1 flame spread resistance of approved make Paint should provide durable and long lasting silk finish with a high crack tolerance of upto 1mm. Paint should have an				
	<b>Ground Floor</b>	<b>113.000</b>	<b>308.00</b>	<b>Sqm</b>	<b>34804.00</b>
22	Providing and applying 2 Coats of 100% Pure acrylic water based paint with special heat reflectance property to withstand the harsh climate for period of atleast 10 years of approved make. Paint system should provide durable and long lasting finish with DFT of min 90 microns and should protect against concrete carbonation with R value of minimum 600 and equivalent concrete layer thickness value of min 150 cm. Paint should have breathability property and should be able to cover hairline cracks in the surface upto 0.5mm The paint has to be applied on a coat of high quality acrylic copolymer based alkali resistant primer with excellent penetrating properties including cleaning, with all leads and lifts at all levels etc complete, as directed by Engineer in charge..Spec. No. : As directed by Engineer in charge. SSR I.No.48.12, Sr.No.1631, P.No.311 (SSR 2022-23 GREEN BUILDING)				
	<b>Ground Floor</b>	<b>190.800</b>	<b>200.00</b>	<b>Sqm</b>	<b>38160.00</b>
23	Providing and applying two coats of synthetic enamel paint of approved colour to new /old structural steel work and wood work in buildings, including scaffolding if necessary, cleaning and preparing the surface (excluding primer coat) etc. complete. Spec. No. Bd.0.5 Page 1 No. 405..SSR I.No.35.07, Sr.No.1077 P.No.227				
	<b>Ground Floor</b>	<b>39.600</b>	<b>96.00</b>	<b>Sqm</b>	<b>3802.00</b>
	<b>Doors &amp; Windows</b>				
24	Providing and fixing rolling shutter fabricated from steel laths of minimum thickness 0.9 mm with lock plate of 3.15 mm thickness reinforced with 35 x 35 x 5 mm angle section fitted with sliding bolts and handles for both sides, deep M.S. channel section of depth and thickness not less than 65 mm and 3.15 mm respectively with hold fast arrangements, M.S. Bracket plate 300 x 300 x 3.15 mm minimum size and shape with square bar, suspension shaft of minimum 32 mm diameter, hood cover of M.S. sheet not less than 0.9 mm thickness and of any size at top and safety devices including mechanical gear operation arrangement consisting of worm gear wheels and worms of high grade cast iron or mild steel and one coat of red lead primer etc. complete. (I.S. 62481979) (With mechanical gear) (I.S. 62481979) (With mechanical gear) Spec.No.BD-T-55 Page Number 510 SSR I.No.39.25, Sr.No.1218 P.No.249				
	<b>Ground Floor</b>	<b>39.600</b>	<b>5308.00</b>	<b>Sqm</b>	<b>210197.00</b>
25	Providing and fixing in position powder coated aluminium louvered windows / ventilator of various sizes with powder coating as per detailed drawing and specifications including aluminium frames 80 x 38 mm x 1.22 mm box type, 5 mm thick sheet glass louvers, of approved quality etc. complete..Spec. No. : As directed by Engineer in charge. SSR I.No.39.68, Sr.No.1263 P.No.259				
	<b>Ground Floor</b>	<b>12.600</b>	<b>3467.00</b>	<b>Sqm</b>	<b>43684.00</b>

## Abstract

Item No.	Item Of Work.	Qty.	Rate	Unit	Amount
<b>Miscellaneous</b>					
26	Providing preconstructional antitermite treatment as per I.S. 6313 (Part-II) by treating the bottom surface and sides of excavation at the rate of 5 litres of emulsion concentrate of 1.0 percent of chlorophyrisfos per square meter of surface area covering 10 years guarantee on bond paper...Spec. No. As directed by Engineer in Charge. SSR I.No.21.22, Sr.No.737, P.No.155	289.760	107.00	No	31004.00
<b>Ground Floor</b>					
27	Providing preconstructional antitermite treatment as per I.S. 6313 (Part-II) by treating the top surface of plinth filling at the rate of 5 litres of emulsion concentrate at 1.0 percent of clorophyrisfos per One Square Metre of surface area covering ten years guarantee on bond paper... Spec. No. As directed by Engineer in harge. SSR I.No.21.24, Sr.No.739 P.No.156	681.152	108.00	No	73564.00
<b>Ground Floor</b>					
28	Providing and fixing of colour coated Zinc aluminium ( R ) AZ150 ( min 150 gms/sq.mt.total on each side ) profiled sheets for roofing. The feed material is manufactured out of nominal 0.45 mm Base Metal Thickness ( BMT ) (0.5 mm TCT ), Hi-strength steel with min.550 MPa yield strength, metallic hot dip coated with Aluminium-Zinc alloy (55% aluminium 43.4% zinc 1.6% silicon) with COLORBOND ( R ) steel quality super durable polyster paint coat ( with inorganic pigment). The paint shall have a total coating thickness of nominal 35 um, comprising of nominal 25um exterior coat on top surface and nominal 10 um reverse coat on back surface. Profile sheet shall have nom. 9501050 mm effective cover width and nominal 25-30 mm deep ribs with subtle square fluting in the five pan at nominal 180-250 mm center- to-center. The end rib shall be designed for anti-capacity groove. and return leg. The feed material should have coil manufacturers product details marked a regular interval. including fasteners with min.fastened with min. 25 um Zinc-Tin alloy coated, Hex head, self-drilling screw etc.complete. (weight of profile 4.52 Kilogram/ One Square Metre) 900 mm girth (Surface Width). Spec. No. As directed by Engineer in Charge. SSR I.No.38.36, Sr.No.1176, P.No.237	1228.810	1120.21	Sqm	1376525.00
<b>Ground Floor</b>					
29	Providing and fixing valley gutter of 22 B.W.G. (0.8 mm) plain galvanised iron sheets 120 cm wide with teak wood planking 20 mm thick including two coats of coal-tarring the upper surface of plank etc. complete. (excluding painting to underside of plank). Spec. No. As directed by Engineer in Charge Spec. No. Bd. R. 10, Page Number 455. SSR I.No.38.08, Sr.No.1148 P.No.233	52.460	2926.00	Rgm	153498.00
<b>Ground Floor</b>					
30	Providing and fixing 22 B.W.G. plain galvanised iron sheets on top of weather shed, including scaffolding, fixing by means of nut and bolts or as directed etc. complete.(Brackets of 70 x 45 mm to be paid separately) Spec No. As directed by Engineer Incharge. SSR I.No.39.88, Sr.No.1283, P.No.263	54.400	1052.00	Sqm	57229.00
<b>Ground Floor</b>					
31	Royalty Charges-as per statement attached	363.690	237.00	Cum	86195.00
	For Sand	256.900	216.18	Cum	55537.00
	For Hard Murum				
<b>Quality Control Charges Items.</b>					
<b>1) Basic Test of Cement</b>					
32	Carrying out basic tests on cement for standard consistancy, Fineness, Specific gravity, Setting time (Initial and Final), Compressive strength, Soundness. Spec. No. As directed by Engineer in Charge. SSR I.No.1 P.No.360	1.000	3770.00	/ Test	3770.00
<b>Ground Floor</b>					

Abstract

Item No.	Item Of Work.	Qty.	Rate	Unit	Amount
<b>4) Basic Test of Concrete</b>					
33	Carrying out basic tests on Concrete cubes for compressive strength.Spec.No.As directed by Engineer in Charge.SSR I.No.20 P.No.387				
	<b>Ground Floor</b>	<b>7.000</b>	<b>690.00</b>	<b>/ Test</b>	<b>4830.00</b>
34	Carrying out basic tests on T.M.T.Steel (Bar testing upto 16 mm) for Tensile strength,% Elongation,Yield stress,Weight /m,Bend/rebend test.proof test.Spec.No.As directed by Engineer in Charge.SSR I.No.90 P.No.364.				
	<b>Ground Floor</b>	<b>1.000</b>	<b>1275.00</b>	<b>/ Test</b>	<b>1275.00</b>
<b>Total Rs : =</b>					<b>8274208.0</b>



  
**JV Structural**  
**Engineers & Consultants**  
**Aurangabad**

Measurement

Name of Work :- Proposed Construction of Godown for Storage of Grain for Atulniya Farmers Producer Company Ltd. Waregaon Tq. Phulambri Dist. Aurangabad

Measurement Sheet

Item No.	Item Of Work.	Nos.	Length.	Breadth.	Height.	Quantity.	Unit.
----------	---------------	------	---------	----------	---------	-----------	-------

**I. Excavation**

1 Excavation for foundation in earth, soil of all types, sand, gravel and soft murum, including removing the excavated material up to a distance of 50 m. beyond the building area and stacking and spreading as directed, dewatering, preparing the bed for the foundation and necessary back filling, ramming, watering including shoring and strutting etc. complete. (Lift upto 1.5 m.) By Mechanical Means. Bd.A.1 Page 1 Number 259. SSR I.No. 21.02, Sr.No.721, P.No.153

**Ground Floor**

Total Footings (14 Nos)

Group no.1 (FC1 )

4 1.650 1.650 0.600 6.530

Group no.2 (FC2 )

6 2.900 2.500 0.600 26.100

Group no.3 (FC3 )

4 2.150 1.750 0.600 9.030

**External Ground beam**

1-2

1 5.575 0.43 0.300 0.720

2-3

1 6.150 0.43 0.300 0.790

3-4

1 6.150 0.43 0.300 0.790

4-5

1 5.575 0.43 0.300 0.720

10-11

1 5.575 0.43 0.300 0.720

11-12

1 6.150 0.43 0.300 0.790

12-13

1 6.150 0.43 0.300 0.790

13-14

1 5.575 0.43 0.300 0.720

1-6

1 7.405 0.43 0.300 0.960

6-8

1 7.990 0.43 0.300 1.030

8-10

1 7.405 0.43 0.300 0.960

5-7

1 7.405 0.43 0.300 0.960

7-9

1 7.990 0.43 0.300 1.030

9-14

1 7.405 0.43 0.300 0.960

Ramp

1 3.000 2.00 0.300 1.800

**Net Qty. For Ground Floor**

**55.400 Cum**

2 Excavation for foundation in hard murum including removing the excavated material upto distance of 50 metres beyond the building area and stacking and spreading as directed, dewatering, preparing the bed for the foundation and necessary back filling, ramming, watering including shoring and strutting etc. complete. (Lift upto 1.50 m) By Mechanical Means Spec.No.: Bd.A.2 Page 1 Number 259 SSR I.No.21.06, Sr.No.725 P.No.153

**Ground Floor**

Total Footings (14 Nos)

Group no.1 (FC1 )

4 1.65 1.650 0.600 6.530

Group no.2 (FC2 )

6 2.90 2.500 0.600 26.100

Group no.3 (FC3 )

4 2.15 1.750 0.600 9.030

**Net Qty. For Ground Floor**

**41.660 Cum**

Measurement

Item No.	Item Of Work.	Nos.	Length.	Breadth.	Height.	Quantity.	Unit.
5	Providing soling using 80 mm size trap metal in 15 cm. layer including filling voids with Crushed sand/grit, ramming, watering etc. complete.. Spec. No. As directed by Engineer in charge. SSR I.No. 21.40, Sr.No. 754, P.No. 157						
	<b>Ground Floor</b>						
	<b>Below Flooring</b>						
	Godown Flooring	1	25.540	24.540	0.150	94.010	
	Loading Platform	4	6.800	2.000	0.150	8.160	
	Ramp	1	3.000	2.000	0.150	0.900	
						<b>103.070</b>	<b>Cum</b>
<b>Net Qty. For Ground Floor</b>							

<b>2. Structural Steel Work</b>							
6	Providing structural steel work in trusses, other similar trussed purlins and members with all bracing, gusset plates etc. as per detailed designs and drawings or as directed including cutting, fabricating, hoisting, erecting fixing in position, Making riveted/ bolted/ welded connection and one coat of anticorrosive paint and over it 2 coats of oil painting approved quality and shade etc. complete. Spec. No. Bd.C.2 Page Number 275 SSR I.No.23.04, Sr.No.819, P.No.173						
	<b>Ground Floor</b>						
	Truss, Steel Column & Beams	1	23000.00	1.000	1.000	23000.000	<b>Kg</b>
	<b>Total Qty</b>					<b>23000.00</b>	<b>Kg</b>
<b>Net Qty. For Ground Floor</b>						<b>23.000</b>	<b>M.T.</b>

<b>3. Plain Cement Concrete</b>							
7	Providing and laying Cast in situ/Ready Mix cement concrete in M-10 of trap/ granite/ quartzite/ gneiss metal for foundation and bedding including bailing out water, Steel centering, formwork, laying/pumping, compacting, roughening them if special finish is to be provided, finishing if required and curing complete, with fully automatic micro processor based PLC with SCADA enabled reversible Drum Type mixer/concrete Batch mix plant (Pan mixer) etc. complete. With fine aggregate (Crushed sand VSI Grade) Spec. No. Bd.E.1 Page 1 No. 287.SSR I.No.24.01, Sr.No.827, P.No.175						
	<b>Ground Floor</b>						
	<b>Below Flooring</b>						
	Godown Flooring	1	25.540	24.540	0.100	62.675	
	Loading Platform	4	6.800	2.000	0.100	5.440	
	Ramp	1	3.000	2.000	0.100	0.600	
<b>Net Qty. For Ground Floor</b>						<b>68.720</b>	<b>Cum</b>

Measurement

Item No.	Item Of Work.	Nos.	Length.	Breadth.	Height.	Quantity.	Unit.
3	Excavation for foundation in hard murum and boulders including removing the excavated material up to a distance 50 metres, beyond the building area and stacking and spreading as directed, dewatering, preparing the bed for the foundation and necessary back filling, ramming, watering including shoring and strutting etc. complete. (Lift upto 1.5m.) By Mechanical Means Spec. No. Bd.A.3 Page Number 259. SSR I.No. 21.10, Sr.No.728, P.No.154						
<b>Ground Floor</b>							
	Total Footings (14 Nos)					3.270	
	Group no.1 (FC1 )	4	1.65	1.650	0.300	13.050	
	Group no.2 (FC2 )	6	2.90	2.500	0.300	4.520	
	Group no.3 (FC3 )	4	2.15	1.750	0.300		
						<b>20.840</b>	<b>Cum</b>
<b>Net Qty. For Ground Floor</b>							
4	Filling in plinth and floors with contractors material/brought from outside and approved by Engineer incharge in layers of 15 cm to 20 cm including watering and compaction etc. complete.. Spec. No. Bd.A.11 Page 1 Number 263. SSR I.No. 21.37, Sr.No. 751, P.No. 157						
<b>Ground Floor</b>							
	Total Footings (14 Nos)					19.600	
	Group no.1 (FC1 )	4	1.650	1.650	1.800	78.300	
	Group no.2 (FC2 )	6	2.900	2.500	1.800	27.090	
	Group no.3 (FC3 )	4	2.150	1.750	1.800		
						<b>124.990</b>	<b>Cum</b>
<b>Total Excavation Qty. (A) =</b>							
	Qty. As Per Item No. 2 (Hard Murum)	1	41.660	1.000	1.000	41.660	
	Qty. As Per Item No. 3 (Hard Murum Boulders)	1	20.840	1.000	1.000	10.420	
	Qty as per - 1:2:4 PCC Below Footing	1	10.420	1.000	1.000	27.800	
	Qty as per - M-20 RCC footing	1	27.800	1.000	1.000	5.770	
	Qty as per - 20 RCC Col. upto GL	1	5.770	1.000	1.000		
						<b>106.490</b>	<b>Cum</b>
<b>Total Deduction Qty. (B) =</b>							
						<b>18.500</b>	<b>Cum</b>
<b>Total Filling Required (A)-(B) =</b>							
<b>Under Flooring</b>							
	Ht = 0.60 - 0.10 - 0.15 = 0.350m.					219.363	
	Godown Flooring	1	25.54	24.54	0.350	19.040	
	Loading Platform	4	6.80	2.00	0.350		
						<b>256.900</b>	<b>Cum</b>
<b>Net Qty. For Ground Floor</b>							

Measurement

Ite m No.	Item Of Work.	Nos.	Length.	Breadth.	Height.	Quantity.	Unit.
-----------------	---------------	------	---------	----------	---------	-----------	-------

8 Providing and laying Cast in situ/Ready Mix cement concrete in M15 of trap/ granite/quartzite/gneiss metal for bed blocks, foundation blocks and such other items including bailing out water, Steel centering, formwork, laying/ pumping, compacting, roughening them if special finish is to be provided, finishing uneven and honeycombed surface and curing etc. complete. The Cement Mortar 1:3 plaster is considered for rendering uneven and honeycombed surface only. Newly laid concrete shall be covered by gunny bag, plastic, tarpaulin etc. (Wooden centering will not be allowed.), with fully automatic micro processor based PLC with SCADA enabled reversible Drum Type mixer/ concrete Batch mix plant (Pan mixer) etc. complete. With fine aggregate (Crushed sand VSI Grade) Sepc. No. Bd.E.4 Page Number 289 and B7, Page Number38. SSR I.No. 24.08, Sr.No. 830, P.176

Ground Floor							
Total Footings (14 Nos)							
	Group no.1 (FC1 )	4	1.650	1.650	0.150	1.630	
	Group no.2 (FC2 )	6	2.900	2.500	0.150	6.530	
	Group no.3 (FC3 )	4	2.150	1.750	0.150	2.260	
<b>Net Qty. For Ground Floor</b>						<b>10.420</b>	<b>Cum</b>

9 Providing and laying in situ cement concrete M20 with tremix treatment for 100 mm thickness for flooring with groove cutting of 4mm wide and 20mm deep with necessary refilling with bitumen etc. complete. Sepc. No. As directed by Engineer in charge. SSR I.No. 33.30, Sr.No. 1017, P.216

Ground Floor							
	Godown Flooring	1	25.540	24.540	-	626.752	
<b>Net Qty. For Ground Floor</b>						<b>626.750</b>	<b>Sqm</b>

**Reinforcement Cement Concrete**

10 Providing and laying in situ /Ready Mix cement concrete M-20 of trap / granite /quartzite/ gneiss metal for R.C.C. work in foundations like raft, strip foundations, grillage and footings of R.C.C. columns and steel stanchions etc. including bailing out water, Steel centering formwork, laying/pumping cover blocks, compaction and curing roughening the surface if special finish is to be provided (Excluding reinforcement and structural steel) etc. complete, with fully automatic micro processor based PLC with SCADA enabled reversible Drum Type mixer/ concrete Batch mix plant (Pan mixer) etc. complete. With fine aggregate (Crushed sand VSI Grade) Spec. No.Bd.F.3 Page 1 No. 298 and B.7, Page No.38. SSR I.No.25.11, Sr.No.836 P.No.178

Ground Floor							
Total Footings (14 Nos)							
	Group no.1 (FC1 )	4	1.350	1.350	0.400	2.920	
	Group no.2 (FC2 )	6	2.600	2.200	0.600	20.590	
	Group no.3 (FC3 )	4	1.850	1.450	0.400	4.290	
<b>Net Qty. For Ground Floor</b>						<b>27.800</b>	<b>Cum</b>

Measurement

Item No.	Item Of Work.	Nos.	Length.	Breadth.	Height.	Quantity.	Unit.	
11	Providing and laying Cast in situ/Ready Mix cement concrete M-20 of trap / granite /quartzite/ gneiss metal for R.C.C. columns as per detailed designs and drawing or as directed including steel centering, formwork, cover blocks, laying/pumping, compaction finishing the formed surfaces with cement mortar 1:3 of sufficient minimum thickness to give a smooth and even surface or roughening if special finish is to be provided and curing etc. complete.(Excluding reinforcement and structural steel).with fully automatic micro processor based PLC with SCADA enabled reversible Drum Type mixer/ concrete Batch mix plant (Pan mixer) etc. complete. With fine aggregate (Crushed sand VSI Grade) Spec. No. : Bd.F.5 Page No. 300 and B.7, Page.No. 38.SSR I.No.25.31, Sr.No.841, P.No.179							
	<b>Ground Floor</b>							
	<b>Column upto GL</b>							
	Group no.1 (FC1 )	4	0.750	0.750	1.250	2.810		
	Group no.2 (FC2 )	6	0.750	0.350	1.050	1.650		
	Group no.3 (FC3 )	4	0.750	0.350	1.250	1.310		
	<b>Column GL to FFL Ht. 0.600</b>							
	Group no.1 (FC1 )	4	0.750	0.750	0.600	1.350		
	Group no.2 (FC2 )	6	0.750	0.350	0.600	0.950		
	Group no.3 (FC3 )	4	0.750	0.350	0.600	0.630		
	<b>Column FFL to 1.20m Ht.</b>							
	Group no.1 (FC1 )	4	0.750	0.750	1.200	2.700		
	Group no.2 (FC2 )	6	0.750	0.350	1.200	1.890		
	Group no.3 (FC3 )	4	0.750	0.350	1.200	1.260		
	<b>Net Qty. For Ground Floor</b>						<b>14.550</b>	<b>Cum</b>

Measurement

Item No.	Item Of Work.	Nos.	Length.	Breadth.	Height.	Quantity.	Unit.
12	Providing and laying Cast in situ/Ready Mix cement concrete M-20 of trap / granite /quartzite/ gneiss metal for R.C.C. beams and lintels as per detailed designs and drawings or as directed including steel centering, formwork, cover blocks, laying/pumping, compactionand roughening the surface if special finish is to be provided and curing etc. complete. (Excluding reinforcement and structural steel). with fully automatic micro processor based PLC with SCADA enabled reversible Drum Type mixer/ concrete Batch mix plant (Pan mixer) etc. complete. With fine aggregate (Crushed sand VSI Grade) Spec. No. Bd.F.6 Page Number 300 and B.7, Page 1 Number38 Page.No. 38.SSR I.No.25.50, Sr.No.846, P.No.181						
<b>Ground Floor</b>							
<b>External Plinth beam total 18 Nos</b>							
<b>PB- (230 X 600) 14 NOS</b>							
	1-2	1	5.575	0.230	0.600	0.770	
	2-3	1	6.150	0.230	0.600	0.850	
	3-4	1	6.150	0.230	0.600	0.850	
	4-5	1	5.575	0.230	0.600	0.770	
	10-11	1	5.575	0.230	0.600	0.770	
	11-12	1	6.150	0.230	0.600	0.850	
	12-13	1	6.150	0.230	0.600	0.850	
	13-14	1	5.575	0.230	0.600	0.770	
	1-6	1	7.405	0.230	0.600	1.020	
	6-8	1	7.990	0.230	0.600	1.100	
	8-10	1	7.405	0.230	0.600	1.020	
	5-7	1	7.405	0.230	0.600	1.020	
	7-9	1	7.990	0.230	0.600	1.100	
	9-14	1	7.405	0.230	0.600	1.020	
<b>Net Qty. For Ground Floor</b>						<b>12.760</b>	<b>Cum</b>

13	Providing and fixing in position TMT - FE - 500 bar reinforcement of various diameters for R.C.C. pile caps, footings, foundations, slabs, beams columns, canopies, staircase, newels, chajjas, lintels pardis, copings, fins, arches etc. as per detailed designs, drawings and schedules. including cutting, bending, hooking the bars, binding with wires or tack welding and supporting as required complete.. Spec.No. Bd.F.17, Page 1 No. 306. SSR I.No.26.33, Sr.No.871, P.No.188						
<b>Ground Floor</b>							
	Qty. As Per Item. No. 11 M20 Footing		27.800	35.00	Kg/Cum	973.00	
	Qty. As Per Item. No. 12 M20 Column		14.550	200.00	Kg/Cum	2910.00	
	Qty. As Per Item. No. 13 M20 Beams		12.760	200.00	Kg/Cum	2552.00	
<b>Total Qty. =</b>						<b>6435.00</b>	<b>Kg.</b>
<b>Net Qty. For Ground Floor</b>						<b>6.440</b>	<b>/M.T.</b>

Measurement

Item No.	Item Of Work.	Nos.	Length.	Breadth.	Height.	Quantity.	Unit.
<b>Brick Work</b>							
14	Providing fly ash brick masonry with conventional / I.S. type fly ash bricks in C.M. 1:6 in foundation and plinth including bailing out water manually striking joints, racking out joints watering and scaffolding etc. complete..Spec. No. As director by engineer in charge and BDG- 2 and 5. SSR I.No.27.12, Sr.No.899 P.No.198						
<b>Ground Floor</b>							
<b>External plinth beam (Plinth Ht = 0.60 - 0.15 - 0.15 = 0.30 m.)</b>							
	1-2	1	5.575	0.230	0.300	0.380	
	2-3	1	6.150	0.230	0.300	0.420	
	3-4	1	6.150	0.230	0.300	0.420	
	4-5	1	5.575	0.230	0.300	0.380	
	10-11	1	5.575	0.230	0.300	0.380	
	11-12	1	6.150	0.230	0.300	0.420	
	12-13	1	6.150	0.230	0.300	0.420	
	13-14	1	5.575	0.230	0.300	0.380	
	1-6	1	7.405	0.230	0.300	0.510	
	6-8	1	7.990	0.230	0.300	0.550	
	8-10	1	7.405	0.230	0.300	0.510	
	5-7	1	7.405	0.230	0.300	0.510	
	7-9	1	7.990	0.230	0.300	0.550	
	9-14	1	7.405	0.230	0.300	0.510	
	Laoding Platform	8	2.000	0.230	0.600	2.210	
		4	6.340	0.230	0.600	3.500	
	Entrance step	4	2.000	0.300	0.150	0.360	
		4	2.000	0.300	0.300	0.720	
		4	2.000	0.300	0.450	1.080	
		4	2.000	0.300	0.600	1.440	
<b>Net Qty. For Ground Floor</b>						<b>15.650</b>	<b>Cum</b>

Measurement

Item No.	Item Of Work.	Nos.	Length.	Breadth.	Height.	Quantity.	Unit.
15	Providing fly ash brick masonry with conventional/ I.S. type bricks in cement mortar 1:6 in superstructure including striking joints, raking out joints, watering and scaffolding etc. Complete. Spec. No. As directed by engineer incharge and BDG- 2 and 5. SSR I.No.27.13, Sr.No.900 P.No.198						
	<b>Ground Floor</b>						
	<b>230mm Thick Brick Wall</b>						
	Ht = 1.20 m.						
	1-2	1	5.575	0.230	1.200	1.540	
	2-3	1	6.150	0.230	1.200	1.700	
	3-4	1	6.150	0.230	1.200	1.700	
	4-5	1	5.575	0.230	1.200	1.540	
	10-11	1	5.575	0.230	1.200	1.540	
	11-12	1	6.150	0.230	1.200	1.700	
	12-13	1	6.150	0.230	1.200	1.700	
	13-14	1	5.575	0.230	1.200	1.540	
	1-6	1	7.405	0.230	1.200	2.040	
	6-8	1	7.990	0.230	1.200	2.210	
	8-10	1	7.405	0.230	1.200	2.040	
	5-7	1	7.405	0.230	1.200	2.040	
	7-9	1	7.990	0.230	1.200	2.210	
	9-14	1	7.405	0.230	1.200	2.040	
	Deduction						
	RS	-4	3.000	0.230	1.200	-3.310	

Net Qty. For Ground Floor

22.230 Cum

**Plastering & Pointing**

16 Providing internal cement plaster 12mm thick in single coat in cement mortar 1:5 without neeru finish to concrete or brick surfaces, in all positions including scaffolding and curing etc. complete Spec. No. : Bd.L.4 Page 1 No. 368. SSR I.No.32.03, Sr.No.957, P.No.209

**Ground Floor**

Internal walls Ht = 1.20 m.

Walls

2	25.54	-	1.200	61.300
2	24.54	-	1.200	58.900

Deduction

RS

-4	3.000	-	1.200	-14.400
----	-------	---	-------	---------

Deduction qty 1/2 X 28.62 = 14.31

1	14.400	0.500	-	7.200
---	--------	-------	---	-------

Net Qty. For Ground Floor

113.000 Sqm

Measurement

Item No.	Item Of Work.	Nos.	Length.	Breadth.	Height.	Quantity.	Unit.
17	Providing sand faced plaster externally in cement mortar using approved screened sand, in all positions including base coat of 15 mm thick in cement mortar 1:4 using waterproofing compound at 1 Kilogram per cement bag curing the same for not less than 2 days and keeping the surface of the base coat rough to receive the sand faced treatment 6 to 8 mm thick in cement mortar 1:4 finishing the surface by taking out grains and curing for fourteen days scaffolding etc. complete. Spec. No. : Bd.L.7 Page 1 No. 369. SSR I.No.32.11, Sr.No.963, P.No.209						
	<b>Ground Floor</b>						
	External walls (Ht = 1.80 m.)						
	L/W	2	26.000	-	1.800	93.600	
	S/W	2	25.000	-	1.800	90.000	
	<b>Deductions</b>						
	RS	-4	-3.00	-	1.200	14.400	
	Deduction qty 1/2 X 28.62 = 14.31	1	-14.400	0.500	-	-7.200	
	<b>Net Qty. For Ground Floor</b>					<b>190.800</b>	<b>Sqm</b>
	<b>Paving, Flooring &amp; Dado</b>						
18	Providing and laying machine cut machine Polished Kota stone flooring 25mm to 30mm thick and required width in plain/ diamond pattern on bed of 1:6 C. M. including cement float, filling joints with neat cement slurry, curing, polishing and cleaning etc. complete.. Spec. No. Bd.M.3 Page 1 No.380.SSR I.No.33.06, Sr.No.993 P.No.213						
	<b>Ground Floor</b>						
	Loading Platform	4	6.80	2.000	-	54.400	
	<b>Net Qty. For Ground Floor</b>					<b>54.400</b>	<b>Sqm</b>
19	Providing and laying machine cut machine polished machine cut Kota stone slabs 20 to 25 mm thick for treads and risers of steps and staircases, with rounded nosing for the treads on a bed of 1:4 cement mortar including cement float, filling joints with neat cement slurry, curing, polishing and cleaning etc. complete.. Spec No.:As directed by Engineer in charge. SSR I.No.33.18, Sr.No.1005, P.214						
	<b>Ground Floor</b>						
	Entrance step						
	Tread	12	2.00	0.300	-	7.200	
	Riser	16	2.00	0.150	-	4.800	
	<b>Net Qty. For Ground Floor</b>					<b>12.000</b>	<b>Sqm</b>
20	Providing and laying chequered tiles of approved quality of size 30 cm x 30 cm, confirming to corresponding I.S. for flooring in required position laid on a bed of 1:4 cement mortar including cement float, filling joint with cement slurry cleaning curing etc. complete.. Spec No.:Bd. M-12 page Number 385. SSR I.No.33.66, Sr.No.1050, P.220						
	<b>Ground Floor</b>						
	Over Ramp	1	3.00	2.000	-	6.000	
	<b>Net Qty. For Ground Floor</b>					<b>6.000</b>	<b>Sqm</b>

Measurement

Item No.	Item Of Work.	Nos.	Length.	Breadth.	Height.	Quantity.	Unit.
	<b>Oil Painting</b>						
21	Providing and applying 2 coats of 100% Pure acrylic low VOC and APEO & HCHO free water based paint of approved colour that belongs to class 1 flame spread resistance of approved make Paint should provide durable and long lasting silk finish with a high crack tolerance of upto 1mm. Paint should have						
	<b>Ground Floor</b>						
	Qty. As Per Item No. 34 (For Wall)	1	113.00	1.000	-	113.000	
						<b>113.000</b>	<b>Sqm</b>
<b>Net Qty. For Ground Floor</b>							

22	Providing and applying 2 Coats of 100% Pure acrylic water based paint with special heat reflectance property to withstand the harsh climate for period of atleast 10 years of approved make. Paint system should provide durable and long lasting finish with DFT of min 90 microns and should protect against concrete carbonation with R value of minimum 600 and equivalent concrete layer thickness value of min 150 cm. Paint should have breathability property and should be able to cover hairline cracks in the surface upto 0.5mm The paint has to be applied on a coat of high quality acrylic copolymer based alkali resistant primer with excellent penetrating properties including cleaning, with all leads and lifts at all levels etc complete, as directed by Engineer in charge..Spec. No. : As directed by Engineer in charge. SSR I.No.48.12, Sr.No.1631, P.No.311 (SSR 2022-23 GREEN BUILDING)						
	<b>Ground Floor</b>						
	Qty. (External Side Plaster)	1	190.80	1.000	-	190.800	
						<b>190.800</b>	<b>Sqm</b>
<b>Net Qty. For Ground Floor</b>							

23	Providing and applying two coats of synthetic enamel paint of approved colour to new /old structural steel work and wood work in buildings, including scaffolding if necessary, cleaning and preparing the surface (excluding primer coat) etc. complete. Spec. No. Bd.0.5 Page 1 No. 405..SSR I.No.35.07, Sr.No.1077 P.No.227						
	<b>Ground Floor</b>						
	RS	4	3.00	-	3.300	39.600	
						<b>39.600</b>	<b>Sqm</b>
<b>Net Qty. For Ground Floor</b>							

<b>Doors &amp; Windows</b>							
24	Providing and fixing rolling shutter fabricated from steel laths of minimum thickness 0.9 mm with lock plate of 3.15 mm thickness reinforced with 35 x 35 x 5 mm angle section fitted with sliding bolts and handles for both sides, deep M.S. channel section of depth and thickness not less than 65 mm and 3.15 mm respectively with hold fast arrangements, M.S. Bracket plate 300 x 300 x 3.15 mm minimum size and shape with square bar, suspension shaft of minimum 32 mm diameter, hood cover of M.S. sheet not less than 0.9 mm thickness and of any size at top and safety devices including mechanical gear operation arrangement consisting of worm gear wheels and worms of high grade cast iron or mild steel and one coat of red lead primer etc. complete. (I.S. 62481979) (With mechanical gear) (I.S. 62481979) (With mechanical gear) Spec.No.BD-T-55 Page Number 510 SSR I.No.39.25, Sr.No.1218 P.No.249						
	<b>Ground Floor</b>						
	RS	4	3.00	-	3.300	39.600	
						<b>39.600</b>	<b>Sqm</b>
<b>Net Qty. For Ground Floor</b>							

Measurement

Item No.	Item Of Work.	Nos.	Length.	Breadth.	Height.	Quantity.	Unit.
25	Providing and fixing in position powder coated aluminium louvered windows / ventilator of various sizes with powder coating as per detailed drawing and specifications including aluminium frames 80 x 38 mm x 1.22 mm box type, 5 mm thick sheet glass louvers, of approved quality etc. complete..Spec. No. : As directed by Engineer in charge. SSR I.No.39.68, Sr.No.1263 P.No.259						
<b>Ground Floor</b>							
V		20	0.60	-	0.600	7.200	
V1		20	0.45	-	0.600	5.400	

<b>Net Qty. For Ground Floor</b>	<b>12.600 Sqm</b>
----------------------------------	-------------------

<b>Miscellaneous</b>							
26	Providing preconstructional antitermite treatment as per I.S. 6313 (Part-II) by treating the bottom surface and sides of excavation at the rate of 5 litres of emulsion concentrate of 1.0 percent of chlorophyrifos per square meter of surface area covering 10 years guarantee on bond paper...Spec. No. As directed by Engineer in Charge. SSR I.No.21.22, Sr.No.737, P.No.155						
<b>Ground Floor</b>							
<b>Pit Bottom</b>							
	Group no.1 (FC1 )	4	1.65	1.650	-	10.890	
	Group no.2 (FC2 )	6	2.90	2.500	-	43.500	
	Group no.3 (FC3 )	4	2.15	1.750	-	15.050	
<b>Pit - Sides</b>							
Footing 14 nos							
	Group no.1 (FC1 )	8	1.65	1.800	-	23.760	
		8	1.65	1.800	-	23.760	
	Group no.2 (FC2 )	12	2.90	1.800	-	62.640	
		12	2.50	1.800	-	54.000	
	Group no.3 (FC3 )	8	2.15	1.800	-	30.960	
		8	1.75	1.800	-	25.200	

<b>Net Qty. For Ground Floor</b>	<b>289.760 Sqm</b>
----------------------------------	--------------------

27	Providing preconstructional antitermite treatment as per I.S. 6313 (Part-II) by treating the top surface of plinth filling at the rate of 5 litres of emulsion concentrate at 1.0 percent of clorophyrifos per One Square Metre of surface area covering ten years guarantee on bond paper... Spec. No. As directed by Engineer in harge. SSR I.No.21.24, Sr.No.739 P.No.156						
<b>Ground Floor</b>							
<b>Below Flooring</b>							
	Godown Flooring	1	25.540	24.540	-	626.752	
	Loading Platform	4	6.800	2.000	-	54.400	

<b>Net Qty. For Ground Floor</b>	<b>681.152 Sqm</b>
----------------------------------	--------------------

Measurement

Item No.	Item Of Work.	Nos.	Length.	Breadth.	Height.	Quantity.	Unit.
28	Providing and fixing of colour coated Zinc aluminium ( R ) AZ150 ( min 150 gms/sq.mt.total on each side ) profiled sheets for roofing. The feed material is manufactured out of nominal 0.45 mm Base Metal Thickness ( BMT ) ( 0.5 mm TCT ), Hi-strength steel with min.550 MPa yield strength, metallic hot dip coated with Aluminium-Zinc alloy ( 55% aluminium 43.4% zinc 1.6% silicon ) with COLORBOND ( R ) steel quality super durable polyester paint coat ( with inorganic pigment ). The paint shall have a total coating thickness of nominal 35 um, comprising of nominal 25um exterior coat on top surface and nominal 10 um reverse coat on back surface. Profile sheet shall have nom. 9501050 mm effective cover width and nominal 25-30 mm deep ribs with subtle square fluting in the five pan at nominal 180-250 mm center- to-center. The end rib shall be designed for anti-capacity groove. and return leg. The feed material should have coil manufacturers product details marked a regular interval. including fasteners with min.fastened with min. 25 um Zinc-Tin alloy coated, Hex head, self-drilling screw etc.complete. (weight of profile 4.52 Kilogram/ One Square Metre) 900 mm girth (Surface Width). Spec. No. As directed by Engineer in Charge. SSR I.No.38.36, Sr.No.1176, P.No.237						
<b>Ground Floor</b>							
	Sheet For Truss Roof	1	26.600	25.000	-	665.000	
	Front & Back Side Triangle Area (0.5*25.35)	2	12.675	2.950	-	74.780	
	Front and Back Side Wall	2	26.00	-	5.165	268.580	
	Left and Right Side Wall	2	25.00	-	5.165	258.250	
	Deduction						
	RS	-4	3.00	-	2.100	-25.200	
	V	-20	0.60	-	0.600	-7.200	
	V1	-20	0.45	-	0.600	-5.400	
<b>Net Qty. For Ground Floor</b>						<b>1228.810</b>	<b>Sqm</b>
29	Providing and fixing valley gutter of 22 B.W.G. ( 0.8 mm ) plain galvanised iron sheets 120 cm wide with teak wood planking 20 mm thick including two coats of coal-tarring the upper surface of plank etc. complete. (excluding painting to underside of plank). Spec. No. As directed by Engineer in Charge Spec. No. Bd. R. 10, Page Number 455. SSR I.No.38.08, Sr.No.1148 P.No.233						
<b>Ground Floor</b>							
	Gutter	2	26.23	-	-	52.460	
<b>Net Qty. For Ground Floor</b>						<b>52.460</b>	<b>Rgm</b>
30	Providing and fixing 22 B.W.G. plain galvanised iron sheets on top of weather shed, including scaffolding, fixing by means of nut and bolts or as directed etc. complete.(Brackets of 70 x 45 mm to be paid separately) Spec No. As directed by Engineer Incharge. SSR I.No.39.88, Sr.No.1283, P.No.263						
<b>Ground Floor</b>							
	Over Loading Platform	4	6.800	2.000	-	54.400	
<b>Net Qty. For Ground Floor</b>						<b>54.400</b>	<b>Sqm</b>

Measurement

Item No.	Item Of Work.	Nos.	Length.	Breadth.	Height.	Quantity.	Unit.
31	Royalty Charges-as per statement attached						
	Foe Sand	1	363.69	1.000	-	363.690	
	Foe Hard Murum	1	256.90	1.000	-	256.900	
<b>Net Qty. For Ground Floor</b>						<b>620.590</b>	<b>Cum</b>

Quality Control Charges Items.

1) Basic Test of Cement

32 Carrying out basic tests on cement for standard consistancy, Fineness, Specific gravity, Setting time (Initial and Final), Compressive strength, Soundness. Spec. No. As directed by Engineer in Charge. SSR I.No.1 P.No.360

		1	-	-	-	1.000	
<b>Net Qty. For Ground Floor</b>						<b>1.000</b>	<b>/Test</b>

4) Basic Test of Concrete

33 Carrying out basic tests on Concrete cubes for compressive strength.Spec.No.As directed by Engineer in Charge.SSR I.No.20 P.No.387

		7	-	-	-	7.000	
<b>Net Qty. For Ground Floor</b>						<b>7.000</b>	<b>/Test</b>

34 Carrying out basic tests on T.M.T.Steel (Bar testing upto 16 mm) for Tensile strength,% Elongation,Yield stress,Weight /m,Bend/rebend test.proof test.Spec.No.As directed by Engineer in Charge.SSR I.No.90 P.No.364.

		1	-	-	-	1.000	
<b>Net Qty. For Ground Floor</b>						<b>1.000</b>	<b>/Test</b>



*[Handwritten Signature]*  
**JV Structural  
 Engineers & Consultants  
 Aurangabad**

## Rate Analysis

Name of Work :- Proposed Construction of Godown for Storage of Grain for Atulniya Farmers Producer Company Ltd. Waregaon Tq. Phulambri Dist. Aurangabad

## Rate Analysis

It. No.	Item Of Work.	Unit.
<b>Excavation</b>		
1	Excavation for foundation in earth, soil of all types, sand, gravel and soft murum, including removing the excavated material up to a distance of 50 m. beyond the building area and stacking and spreading as directed, dewatering, preparing the bed for the foundation and necessary back filling, ramming, watering including shoring and strutting etc. complete. (Lift upto 1.5 m.) By Mechanical Means. Bd.A.1 Page 1 Number 259. SSR I.No. 21.02, Sr.No.721, P.No.153	
	Basic Rate As Per SSR 2022-23	Rs : 207.00
	<b>Net Amount For Ground Floor</b>	<b>207.000 /Cum</b>
2	Excavation for foundation in hard murum including removing the excavated material upto distance of 50 metres beyond the building area and stacking and spreading as directed, dewatering, preparing the bed for the foundation and necessary back filling, ramming, watering including shoring and strutting etc. complete. (Lift upto 1.50 m) By Mechanical Means Spec.No.: Bd.A.2 Page 1 Number 259 SSR I.No.21.06, Sr.No.725 P.No.153	
	Basic Rate As Per SSR 2022-23	Rs : 227.00
	<b>Net Amount For Ground Floor</b>	<b>227.000 /Cum</b>
3	Excavation for foundation in hard murum and boulders including removing the excavated material up to a distance 50 metres, beyond the building area and stacking and spreading as directed, dewatering, preparing the bed for the foundation and necessary back filling, ramming, watering including shoring and strutting etc. complete. (Lift upto 1.5m.) By Mechanical Means Spec. No. Bd.A.3 Page Number 259. SSR I.No. 21.10, Sr.No.728, P.No.154	
	Basic Rate As Per SSR 2022-23	Rs : 252.00
	<b>Net Amount For Ground Floor</b>	<b>252.000 /Cum</b>
4	Filling in plinth and floors with contractors material/brought from outside and approved by Engineer incharge in layers of 15 cm to 20 cm including watering and compaction etc. complete.. Spec. No. Bd.A.11 Page 1 Number 263. SSR I.No. 21.37, Sr.No. 751, P.No. 157	
	Basic Rate As Per SSR 2022-23	Rs : 599.00
	Add Lead Charges For Hard Murum 1 1.00 219.98	Rs : 219.98
	<b>Net Amount For Ground Floor</b>	<b>818.980 /Cum</b>
5	Providing soling using 80 mm size trap metal in 15 cm. layer including filling voids with Crushed sand/grit, ramming, watering etc. complete.. Spec. No. As directed by Engineer in charge. SSR I.No. 21.40, Sr.No. 754, P.No. 157	
	Basic Rate As Per SSR 2022-23	Rs : 1454.00
	Add Lead Charges For Metal 1 1.00 540.53	Rs : 540.53
	Add Lead Charges For Sand 1 0.15 263.19	Rs : 39.48
	<b>Net Amount For Ground Floor</b>	<b>2034.010 /Cum</b>

Rate Analysis

It. No.	Item Of Work.	Unit.
---------	---------------	-------

**Structural Steel Work**

- 6 Providing structural steel work in trusses, other similar trussed purlins and members with all bracing, gusset plates etc. as per detailed designs and drawings or as directed including cutting, fabricating, hoisting, erecting fixing in position, Making riveted/ bolted/ welded connection and one coat of anticorrosive paint and over it 2 coats of oil painting approved quality and shade etc. complete. Spec. No. Bd.C.2 Page Number 275 SSR I.No.23.04, Sr.No.819, P.No.173

Basic Rate As Per SSR 2022-23				Rs :	119459.00
Add Lead Charges For Steel	1	1.00	0.00	Rs :	0.00
<b>Net Amount For Ground Floor</b>					<b>119459.00 /M.T.</b>

**Plain Cement Concrete**

- 7 Providing and laying Cast in situ/Ready Mix cement concrete in M-10 of trap/ granite/ quartzite/ gneiss metal for foundation and bedding including bailing out water, Steel centering, formwork, laying/pumping, compacting, roughening them if special finish is to be provided, finishing if required and curing complete, with fully automatic micro processor based PLC with SCADA enabled reversible Drum Type mixer/concrete Batch mix plant (Pan mixer) etc. complete. With fine aggregate (Crushed sand VSI Grade) Spec. No. Bd.E.1 Page 1 No. 287.SSR I.No.24.01, Sr.No.827, P.No.175

Basic Rate As Per SSR 2022-23				Rs :	5830.00
Deduct 10% For Scada	-1	0.10	5830.00	Rs :	-583.00
<b>Sub Total</b>					<b>Rs : 5247.00 /Cum</b>
Add Lead Charges For 40mm Metal	1	0.70	423.41	Rs :	296.39
Add Lead Charges For 20mm Metal	1	0.24	441.82	Rs :	106.04
Add Lead Charges For Sand	1	0.47	263.19	Rs :	123.70
Add Lead Charges For Cement	1	0.22	0.00	Rs :	0.00
<b>Net Amount For Ground Floor</b>					<b>5773.120 /Cum</b>

- 8 Providing and laying Cast in situ/Ready Mix cement concrete in M15 of trap/ granite/quartzite/gneiss metal for bed blocks, foundation blocks and such other items including bailing out water, Steel centering, formwork, laying/ pumping, compacting, roughening them if special finish is to be provided, finishing uneven and honeycombed surface and curing etc. complete. The Cement Mortar 1:3 plaster is considered for rendering uneven and honeycombed surface only. Newly laid concrete shall be covered by gunny bag, plastic, tarpaulin etc. (Wooden centering will not be allowed.), with fully automatic micro processor based PLC with SCADA enabled reversible Drum Type mixer/ concrete Batch mix plant (Pan mixer) etc. complete. With fine aggregate (Crushed sand VSI Grade) Sepc. No. Bd.E.4 Page Number 289 and B7, Page Number38. SSR I.No. 24.08, Sr.No. 830, P.176

Basic Rate As Per SSR 2022-23				Rs :	6359.00
Deduct 10% For Scada	-1	0.10	6359.00	Rs :	-635.90
<b>Sub Total</b>					<b>Rs : 5723.10 /Cum</b>
Add Lead Charges For 40mm Metal	1	0.56	423.41	Rs :	237.11
Add Lead Charges For 20mm Metal	1	0.22	441.82	Rs :	97.20
Add Lead Charges For 10 / 12mm Metal	1	0.11	441.82	Rs :	48.60
Add Lead Charges For Sand	1	0.44	263.19	Rs :	115.80
Add Lead Charges For Cement	1	0.30	0.00	Rs :	0.00
<b>Net Amount For Ground Floor</b>					<b>6221.810 /Cum</b>

Rate Analysis

It. No.	Item Of Work.	Unit.
9	Providing and laying in situ cement concrete M20 with tremix treatment for 100 mm thickness for flooring with groove cutting of 4mm wide and 20mm deep with necessary refilling with bitumen etc. complete. Sepc. No. As directed by Engineer in charge. SSR I.No. 33.30, Sr.No. 1017, P.216	
	Basic Rate As Per SSR 2022-23	Rs : 796.00
	Add Lead Charges For 20mm Metal	1 0.57 441.82 Rs : 251.84
	Add Lead Charges For 10 / 12mm Metal	1 0.28 441.82 Rs : 123.71
	Add Lead Charges For Sand	1 0.425 263.19 Rs : 111.86
	Add Lead Charges For Cement	1 0.40 0.00 Rs : 0.00
<b>Net Amount For Ground Floor</b>		<b>1283.400 /Sqm</b>

**Reinforcement Cement Concrete**

- 10 Providing and laying in situ /Ready Mix cement concrete M-20 of trap / granite /quartzite/ gneiss metal for R.C.C. work in foundations like raft, strip foundations, grillage and footings of R.C.C. columns and steel stanchions etc. including bailing out water, Steel centering formwork, laying/pumping cover blocks, compaction and curing roughening the surface if special finish is to be provided (Excluding reinforcement and structural steel) etc. complete, with fully automatic micro processor based PLC with SCADA enabled reversible Drum Type mixer/ concrete Batch mix plant (Pan mixer) etc. complete. With fine aggregate (Crushed sand VSI Grade) Spec. No.Bd.F.3 Page 1 No. 298 and B.7, Page No.38. SSR I.No.25.11, Sr.No.836 P.No.178

	Basic Rate As Per SSR 2022-23		Rs : 7104.00
	Deduct 10% For Scada	-1 0.10 7104.00	Rs : -710.40
<b>Sub Total</b>			<b>Rs : 6393.60 /Cum</b>
	Add Lead Charges For 20mm Metal	1 0.570 441.82	Rs : 251.84
	Add Lead Charges For 10 / 12mm Metal	1 0.280 441.82	Rs : 123.71
	Add Lead Charges For Sand	1 0.425 263.19	Rs : 111.86
	Add Lead Charges For Cement	1 0.350 0.00	Rs : 0.00
<b>Net Amount For Ground Floor</b>			<b>Rs : 6881.000 /Cum</b>

- 11 Providing and laying Cast in situ/Ready Mix cement concrete M-20 of trap / granite /quartzite/ gneiss metal for R.C.C. columns as per detailed designs and drawing or as directed including steel centering, formwork, cover blocks, laying/pumping, compaction finishing the formed surfaces with cement mortar 1:3 of sufficient minimum thickness to give a smooth and even surface or roughening if special finish is to be provided and curing etc. complete.(Excluding reinforcement and structural steel).with fully automatic micro processor based PLC with SCADA enabled reversible Drum Type mixer/ concrete Batch mix plant (Pan mixer) etc. complete. With fine aggregate (Crushed sand VSI Grade) Spec. No. : Bd.F.5 Page No. 300 and B.7, Page.No. 38.SSR I.No.25.31, Sr.No.841, P.No.179

	Basic Rate As Per SSR 2022-23		Rs : 13783.00
	Deduct 10% For Scada	-1 0.10 13783.0	Rs : -1378.30
<b>Sub Total</b>			<b>Rs : 12404.70 /Cum</b>
	Add Lead Charges For 20mm Metal	1 0.570 441.82	Rs : 251.84
	Add Lead Charges For 10 / 12mm Metal	1 0.280 441.82	Rs : 123.71
	Add Lead Charges For Sand	1 0.425 263.19	Rs : 111.86
	Add Lead Charges For Cement	1 0.350 0.00	Rs : 0.00
<b>Net Amount For Ground Floor</b>			<b>12892.100 /Cum</b>

Rate Analysis

It. No.	Item Of Work.	Unit.
---------	---------------	-------

- 12 Providing and laying Cast in situ/Ready Mix cement concrete M-20 of trap / granite /quartzite/ gneiss metal for R.C.C. beams and lintels as per detailed designs and drawings or as directed including steel centering, formwork, cover blocks, laying/pumping, compaction and roughening the surface if special finish is to be provided and curing etc. complete. (Excluding reinforcement and structural steel). with fully automatic micro processor based PLC with SCADA enabled reversible Drum Type mixer/ concrete Batch mix plant (Pan mixer) etc. complete. With fine aggregate (Crushed sand VSI Grade) Spec. No. :Bd.F.6 Page Number 300 and B.7, Page 1 Number 38 Page.No. 38.SSR I.No.25.50, Sr.No.846, P.No.181

Basic Rate As Per SSR 2022-23				Rs :	12269.00
Deduct 10% For Scada	-1	0.10	12269.0	Rs :	-1226.90
<b>Sub Total</b>				<b>Rs :</b>	<b>11042.10 /Cum</b>
Add Lead Charges For 20mm Metal	1	0.570	441.82	Rs :	251.84
Add Lead Charges For 10 / 12mm Metal	1	0.280	441.82	Rs :	123.71
Add Lead Charges For Sand	1	0.425	263.19	Rs :	111.86
Add Lead Charges For Cement	1	0.350	0.00	Rs :	0.00
<b>Net Amount For Ground Floor</b>					<b>11529.500 /Cum</b>

- 13 Providing and fixing in position TMT - FE - 500 bar reinforcement of various diameters for R.C.C. pile caps, footings, foundations, slabs, beams columns, canopies, staircase, newels, chajjas, lintels pardis, copings, fins, arches etc. as per detailed designs, drawings and schedules. including cutting, bending, hooking the bars, binding with wires or tack welding and supporting as required complete.. Spec.No. Bd.F.17, Page 1 No. 306. SSR I.No.26.33, Sr.No.871, P.No.188

Basic Rate As Per SSR 2022-23				Rs :	89703.00
Add Lead Charges For Steel	1	1.00	0.00	Rs :	0.00
<b>Net Amount For Ground Floor</b>					<b>89703.000 /M.T.</b>

**Brick Work**

- 14 Providing fly ash brick masonry with conventional / I.S. type fly ash bricks in C.M. 1:6 in foundation and plinth including bailing out water manually striking joints, racking out joints watering and scaffolding etc. complete..Spec. No. As director by engineer in charge and BDG- 2 and 5. SSR I.No.27.12, Sr.No.899 P.No.198

Basic Rate As Per SSR 2022-23				Rs :	6884.00
Add Lead Charges For Brick	1	475	1.210	Rs :	574.75
Add Lead Charges For Sand	1	0.320	263.190	Rs :	84.22
Add Lead Charges For Cement	1	0.079	0.000	Rs :	0.00
<b>Net Amount For Ground Floor</b>					<b>7542.970 /Cum</b>

- 15 Providing fly ash brick masonry with conventional/ I.S. type bricks in cement mortar 1:6 in superstructure including striking joints, raking out joints, watering and scaffolding etc. Complete. Spec. No. As director by engineer incharge and BDG- 2 and 5. SSR I.No.27.13, Sr.No.900 P.No.198

Basic Rate As Per SSR 2022-23				Rs :	7106.00
Add Lead Charges For Brick	1	475	1.210	Rs :	574.75
Add Lead Charges For Sand	1	0.320	263.190	Rs :	84.22
Add Lead Charges For Cement	1	0.079	0.000	Rs :	0.00
<b>Net Amount For Ground Floor</b>					<b>7764.970 /Cum</b>

## Rate Analysis

It. No.	Item Of Work.	Unit.
<b>Plastering &amp; Pointing</b>		
16	Providing internal cement plaster 12mm thick in single coat in cement mortar 1:5 without neeru finish to concrete or brick surfaces, in all positions including scaffolding and curing etc. complete Spec. No. : Bd.L.4 Page 1 No. 368. SSR I.No.32.03, Sr.No.957, P.No.209	
	Basic Rate As Per SSR 2022-23	Rs : 271.00
	Add Lead Charges For Sand 1 0.015 263.190	Rs : 3.95
	Add Lead Charges For Cement 1 0.00450 0.000	Rs : 0.00
<b>Net Amount For Ground Floor</b>		<b>274.950 /Sqm</b>
17	Providing sand faced plaster externally in cement mortar using approved screened sand, in all positions including base coat of 15 mm thick in cement mortar 1:4 using waterproofing compound at 1Kilogramper cement bag curing the same for not less than 2 days and keeping the surface of the base coat rough to receive the sand faced treatment 6 to 8 mm thick in cement mortar 1:4 finishing the surface by taking out grains and curing for fourteen days scaffolding etc.complete. Spec. No. : Bd.L.7 Page 1 No. 369. SSR I.No.32.11, Sr.No.963, P.No.209	
	Basic Rate As Per SSR 2022-23	Rs : 639.00
	Add Lead Charges For Sand 1 0.033 263.190	Rs : 8.69
	Add Lead Charges For Cement 1 0.0125 0.000	Rs : 0.00
<b>Net Amount For Ground Floor</b>		<b>647.690 /Sqm</b>
<b>Paving, Flooring &amp; Dado</b>		
18	Providing and laying machine cut machine Polished Kota stone flooring 25mm to 30mm thick and required width in plain/ diamond pattern on bed of 1:6 C. M. including cement float, filling joints with neat cement slurry, curing, polishing and cleaning etc. complete.. Spec. No. Bd.M.3 Page 1 No.380.SSR I.No.33.06, Sr.No.993 P.No.213	
	Basic Rate As Per SSR 2022-23	Rs : 1247.00
	Add Lead Charges For Sand 1 0.022 263.190	Rs : 5.79
	Add Lead Charges For Cement 1 0.00675 0.000	Rs : 0.00
<b>Net Amount For Ground Floor</b>		<b>1252.790 /Sqm</b>
19	Providing and laying machine cut machine polished machine cut Kota stone slabs 20 to 25 mm thick for treads and risers of steps and staircases, with rounded nosing for the treads on a bed of 1:4 cement mortar including cement float, filling joints with neat cement slurry, curing, polishing and cleaning etc. complete.. Spec No.:As directed by Engineer in charge. SSR I.No.33.18, Sr.No.1005, P.214	
	Basic Rate As Per SSR 2022-23	Rs : 1572.00
	Add Lead Charges For Sand 1 0.020 263.190	Rs : 5.26
	Add Lead Charges For Cement 1 0.00925 0.000	Rs : 0.00
<b>Net Amount For Ground Floor</b>		<b>1577.260 /Sqm</b>
20	Providing and laying chequered tiles of approved quality of size 30 cm x 30 cm, confirming to corresponding I.S. for flooring in required position laid on a bed of 1:4 cement mortar including cement float, filling joint with cement slurry cleaning curing etc. complete.. Spec No.:Bd. M-12 page Number 385. SSR I.No.33.66, Sr.No.1050, P.220	
	Basic Rate As Per SSR 2022-23	Rs : 735.00
	Add Lead Charges For Sand 1 0.020 263.190	Rs : 5.26
	Add Lead Charges For Cement 1 0.00800 0.000	Rs : 0.00
<b>Net Amount For Ground Floor</b>		<b>740.260 /Sqm</b>

It. No.	Item Of Work.	Unit.
<b>Oil Painting</b>		
21	Providing and applying 2 coats of 100% Pure acrylic low VOC and APEO & HCHO free water based paint of approved colour that belongs to class 1 flame spread resistance of approved make. Paint should provide durable and long lasting silk finish with a high crack tolerance of upto 1mm. Paint should have an outstanding washability with high resistance to wide range of bacteria and fungus. Paint has to be applied on smooth and uniform surface prepared by an acrylic copolymer low VOC & Odour putty. This surface should be primed with water based low VOC Primer. The work activity should cover all aspects of applying paints from surface preparation as directed by Engineer in charge. SSR I.No.48.11, Sr.No.1630, P.No.311 (SSR 2022-23 GREEN BUILDING)	
	Basic Rate As Per SSR 2022-23	Rs : 308.00
	<b>Net Amount For Ground Floor</b>	<b>308.000 /Sqm</b>
22	Providing and applying 2 Coats of 100% Pure acrylic water based paint with special heat reflectance property to withstand the harsh climate for period of atleast 10 years of approved make. Paint system should provide durable and long lasting finish with DFT of min 90 microns and should protect against concrete carbonation with R value of minimum 600 and equivalent concrete layer thickness value of min 150 cm. Paint should have breathability property and should be able to cover hairline cracks in the surface upto 0.5mm The paint has to be applied on a coat of high quality acrylic copolymer based alkali resistant primer with excellent penetrating properties including cleaning, with all leads and lifts at all levels etc complete, as directed by Engineer in charge..Spec. No. : As directed by Engineer in charge. SSR I.No.48.12, Sr.No.1631, P.No.311 (SSR 2022-23 GREEN BUILDING)	
	Basic Rate As Per SSR 2022-23	Rs : 200.00
	<b>Net Amount For Ground Floor</b>	<b>200.000 /Sqm</b>
23	Providing and applying two coats of synthetic enamel paint of approved colour to new /old structural steel work and wood work in buildings, including scaffolding if necessary, cleaning and preparing the surface (excluding primer coat) etc. complete. Spec. No. Bd.0.5 Page 1 No. 405..SSR I.No.35.07, Sr.No.1077 P.No.227	
	Basic Rate As Per SSR 2022-23	Rs : 96.00
	<b>Net Amount For Ground Floor</b>	<b>96.000 /Sqm</b>
<b>Doors &amp; Windows</b>		
24	Providing and fixing rolling shutter fabricated from steel laths of minimum thickness 0.9 mm with lock plate of 3.15 mm thickness reinforced with 35 x 35 x 5 mm angle section fitted with sliding bolts and handles for both sides, deep M.S. channel section of depth and thickness not less than 65 mm and 3.15 mm respectively with hold fast arrangements, M.S. Bracket plate 300 x 300 x 3.15 mm minimum size and shape with square bar, suspension shaft of minimum 32 mm diameter, hood cover of M.S. sheet not less than 0.9 mm thickness and of any size at top and safety devices including mechanical gear operation arrangement consisting of worm gear wheels and worms of high grade cast iron or mild steel and one coat of red lead primer etc. complete. (I.S. 62481979) (With mechanical gear) (I.S. 62481979) (With mechanical gear) Spec.No.BD-T-55 Page Number 510 SSR I.No.39.25, Sr.No.1218 P.No.249	
	Basic Rate As Per SSR 2022-23	Rs : 5308.00
	<b>Net Amount For Ground Floor</b>	<b>5308.00 /Sqm</b>


Rate Analysis

It. No.	Item Of Work.	Unit.
25	Providing and fixing in position powder coated aluminium louvered windows / ventilator of various sizes with powder coating as per detailed drawing and specifications including aluminium frames 80 x 38 mm x 1.22 mm box type, 5 mm thick sheet glass louvers, of approved quality etc. complete..Spec. No. : As directed by Engineer in charge. SSR I.No.39.68, Sr.No.1263 P.No.259	
	Basic Rate As Per SSR 2022-23	Rs : 3467.00
<b>Net Amount For Ground Floor</b>		<b>3467.00 /Sqm</b>
<b>Miscellaneous</b>		
26	Providing preconstructional antitermite treatment as per I.S. 6313 (Part-II) by treating the bottom surface and sides of excavation at the rate of 5 litres of emulsion concentrate of 1.0 percent of chlorophyrifos per square meter of surface area covering 10 years guarantee on bond paper...Spec. No. As directed by Engineer in Charge. SSR I.No.21.22, Sr.No.737, P.No.155	
	Basic Rate As Per SSR 2022-23	Rs : 107.00
<b>Net Amount For Ground Floor</b>		<b>107.000 /Sqm</b>
27	Providing preconstructional antitermite treatment as per I.S. 6313 (Part-II) by treating the top surface of plinth filling at the rate of 5 litres of emulsion concentrate at 1.0 percent of clorophyrifos per One Square Metre of surface area covering ten years guarantee on bond paper... Spec. No. As directed by Engineer in harge. SSR I.No.21.24, Sr.No.739 P.No.156	
	Basic Rate As Per SSR 2022-23	Rs : 108.00
<b>Net Amount For Ground Floor</b>		<b>108.000 /Sqm</b>
28	Providing and fixing of colour coated Zinc aluminium ( R ) AZ150 ( min 150 gms/sq.mt.total on each side ) profiled sheets for roofing. The feed material is manufactured out of nominal 0.45 mm Base Metal Thickness ( BMT ) (0.5 mm TCT ), Hi-strength steel with min.550 MPa yield strength, metallic hot dip coated with Aluminium-Zinc alloy (55% aluminiumm 43.4% zinc 1.6% silicon) with COLORBOND ( R ) steel quality super durable polyster paint coat ( with inorganic pigment). The paint shall have a total coating thickness of nominal 35 um, comprising of nominal 25um exterior coat on top surface and nominal 10 um reverse coat on back surface. Profile sheet shall have nom. 9501050 mm effective cover width and nominal 25-30 mm deep ribs with subtle square fluting in the five pan at nominal 180-250 mm center- to-center. The end rib shall be designed for anti-capacity groove. and return leg. The feed material should have coil manufacturers product details marked a regular interval. including fasteners with min.fastened with min. 25 um Zinc-Tin alloy coated, Hex head, self-drilling screw etc.complete. (weight of profile 4.52 Kilogram/ One Square Metre) 900 mm girth (Surface Width). Spec. No. As directed by Engineer in Charge. SSR I.No.38.36, Sr.No.1176, P.No.237	
	Basic Rate As Per SSR 2022-23	(A) Rs : 1068.00
	Add For Turbo ventilator 24". Supply Rate. 4 8680.00	665.000 Rs : 52.21
	Building (Bd-R : Roofing and ceiling) Sr.No. 42, Page No.374	
<b>Sub Total</b>		<b>Rs : 1120.210 /Sqm</b>
<b>Net Amount For Ground Floor</b>		<b>Rs. 1120.210 /Sqm</b>

Rate Analysis

It. No.	Item Of Work.	Unit.
29	Providing and fixing valley gutter of 22 B.W.G. (0.8 mm) plain galvanised iron sheets 120 cm wide with teak wood planking 20 mm thick including two coats of coal-tarring the upper surface of plank etc. complete. (excluding painting to underside of plank). Spec. No. As directed by Engineer in Charge Spec. No. Bd. R. 10, Page Number 455. SSR I.No.38.08, Sr.No.1148 P.No.233	
	Basic Rate As Per SSR 2022-23	Rs : 2926.00
	<b>Net Amount For Ground Floor</b>	<b>2926.000 /Rgm</b>
30	Providing and fixing 22 B.W.G. plain galvanised iron sheets on top of weather shed, including scaffolding, fixing by means of nut and bolts or as directed etc. complete.(Brackets of 70 x 45 mm to be paid separately) Spec No. As directed by Engineer Incharge. SSR I.No.39.88, Sr.No.1283, P.No.263	
	Basic Rate As Per SSR 2022-23	Rs : 1052.00
	<b>Net Amount For Ground Floor</b>	<b>1052.000 /Sqm</b>



  
**JV Structural  
 Engineers & Consultants  
 Aurangabad**

**Name of Work :- Proposed Construction of Godown for Storage of Grain  
for Atulniya Farmers Producer Company Ltd. Waregaon Tq. Phulambri  
Dist. Aurangabad**

## Royalty Statement

Item	ITEM OF WORK	UNIT	TOTAL QTY.	SAND		SM / HM	
				Cons. Rate	Qty.		
###	Filling in plinth and floors with approved excavated material in 15cm. to 20cm. SSR I.No. 21.36, Sr.No. 743 P.No.152	Cum	256.90	-	-	1.000	256.90
5	Providing soling using 80 mm size trap metal in 15 cm. layer including filling voids with SSR I.No. 21.40, Sr.No. 747, P.No. 152	Cum	103.070	0.150	15.460	-	-
7	Providing and laying Cast in situ/Ready Mix cement concrete in M-10 of trap/ granite/ quartzite/ gneiss metal for foundation SSR I.No.24.01, Sr.No.820, P.No.169	Cum	68.720	0.470	32.300	-	-
8	Providing and laying Cast in situ/Ready Mix cement concrete in M15 of trap/ granite/ quartzite/ gneiss metal for bed blocks, foundation SSR I.No. 24.08, Sr.No. 823, P.169	Cum	10.420	0.440	4.580	-	-
9	Providing and laying in-situ M30 Grade unreinforced plain cement concrete pavement over a prepared sub base SSR I.No. 5.01, Sr.No. 169, P.39	Cum	626.750	0.425	266.370	-	-
10	Providing and laying in situ /Ready Mix cement concrete M-20 of trap / granite /quartzite/ gneiss metal for R.C.C. work in foundations. SSR I.No.25.11, Sr.No.829 P.No.172	Cum	27.800	0.425	11.820	-	-
11	Providing and laying Cast in situ/Ready Mix cement concrete M-20 of trap / granite /quartzite/ gneiss metal for R.C.C. columns SSR I.No.25.31, Sr.No.834, P.No.173						
	Ground Floor	Cum	14.550	0.425	6.180	-	-
12	Providing and laying Cast in situ/Ready Mix cement concrete M-20 of trap / granite /quartzite/ gneiss metal for R.C.C. beams SSR I.No.25.50, Sr.No.839, P.No.175						
	Ground Floor	Cum	12.760	0.425	5.420	-	-

## Royalty

14	Providing fly ash brick masonry with conventional / I.S. type fly ash bricks in C.M. 1:6 in foundation and plinth including SSR I.No.27.12, Sr.No.892 P.No.190	Cum	15.650	0.320	5.010	-	-
15	Providing fly ash brick masonry with conventional/ I.S. type bricks in cement mortar 1:6 in superstructure SSRI.No.27.13, Sr.No.893 P.No.190						
	Ground Floor	Cum	22.230	0.320	7.110	-	-
16	Providing internal cement plaster 12mm thick in single coat in cement mortar 1:5 SSRI.No.32.03, Sr.No.950, P.No.201						
	Ground Floor	Sqm	113.000	0.015	1.700	-	-
17	Providing sand faced plaster externally in cement mortar using approved screened SSR I.No.32.11, Sr.No.956 P.No.201						
	Ground Floor	Sqm	190.800	0.0330	6.300	-	-
18	Providing and laying machine cut machine Polished Kota stone flooring 25mm to 30mm thick and required width in plain/ diamond SSR I.No.33.06, Sr.No.986 P.No.205						
	First Floor	Sqm	54.400	0.022	1.200	-	-
19	Providing and laying machine cut machine polished machine cut Kota stone slabs 20 to 25 mm thick for treads and risers of steps SSR I.No.33.18, Sr.No.998, P.207						
	Ground Floor	Sqm	12.000	0.0200	0.240	-	-
TOTAL QTY.					363.69	256.90	
RATE OF ROYALTY					237.00	216.18	
ROYALTY AMOUNT					86195.00	55537.00	

TOTAL QTY. 620.59  
TOTAL AMOUNT 141732.00



*[Signature]*  
JV Structural  
Engineers & Consultants  
Aurangabad

## Abstract (B.T.Roads)

Name of Work : Proposed Construction of Godown for Storage of Grain for Atulniya Farmers  
Abstract (B.T.Roads)

Item of Work	Quantity	Rate	Unit	Amount
<b>Item No.1</b> Construction of granular sub-base by providing close graded material, spreading in uniform layers with motor grader / Paver on prepared surface, mixing by mix in place method with rotavator at OMC, and compacting with vibratory roller to achieve the desired density, complete as per clause 401 -- By Mix in Place Method and Grading - I Material. Morth 401. SSR I.No.3.04 P.No.30	195.30	2152.78	Cum	420438.00
<b>Item No.2</b> Providing, laying, spreading and compacting stone aggregates of specific sizes to water bound macadam specification including spreading in uniform thickness, hand packing to proper grade and camber, applying and brooming requisite type of screening/ binding Materials to fillup the interstices of coarse aggregate, watering and compacting with Intelligent Compactor with compaction analyzer and V-Sat attachment. to the required density. Grading II (Using Screening Type B (11.2 mm) Aggregate) SSR I.No.3.20 P.No.25	96.08	2560.78	Cum	246040.00
<b>Item No.3</b> Providing and constructing 75 mm. thick Modified Penetration Macadam (MPM) road surface including all materials, preparing the existing road surface, spreading 40 mm. stone metal layers 30% crusher broken metal + 70% Hand broken (by breaking rubble obtained by blasting) heating and spraying the bitumen of specified grade @ 2 Kg/sqm, spreading 12 mm.size chips compacting with three wheel static roller having weight 8 to 10 MT. to achive the desired degree of compaction as per Technical Specification Clause 506 etc. complete. Including picking of existing WBM surface. (VG-30 bulk bitumen rates are considered to arrive at rates) Spec No. IRC-SP-20, 2002 Clause No. 8.7.3. SSR I.No.3.35a P.No.35	94.50	351.30	Sqm	33198.00

**Item No.4**

Open Graded Premix Surfacing- Providing and Laying 1260.00 203.47 Sqm 256369.00  
 OGC 20 mm thickness composed of 13.2 mm to 5.6 mm aggregates premixed with bituminous binder transported to site with VTS , laid over a previously prepared surface, finished to the required grade, level, alignment, and rolling to achieve the desired compaction but excluding prime / tack and Seal coat. For Bitumen of specified grade--USING drum mix type hot mix plant with SCADA, Paver and Vibratory roller ( Over MPM Surface) (VG-30 bulk bitumen rates are considered to arrive at rates) MORTH 511 SSR I.No.4.12 P.No.43

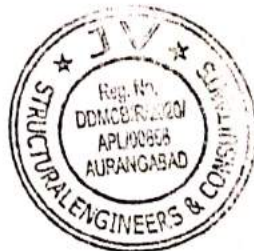
**Item No.5**


Providing and applying tack coat on the prepared 1260.00 84.89 Sqm 106961.00  
 surface heating by fames in Boiler and spraying bitumen with sprayer on Dry / Hungry B.T. surface 3 kg/10 sqm. (VG-30 bulk bitumen rates are considered to arrive at rates) SSR I.No.3.31 P.No.34

**Item No.6**

Providing and laying of Type - B premix seal coat with 1260.00 71.54 Sqm 90140.00  
 HMP of appropriate crushed stone chipping 6.70 mm size and penetration bitumen of specified grade @ 0.68 Kg Sqm. , preparing existing road surface including mixing in suitable Batch Mix plant and rolling by static roller having weight 8 to 10 MT. etc. complete. (VG-30 bulk bitumen rates are considered to arrive at rates) MORTH 513 SSR I.No.4.03 P.No.41

<b>Total:</b>	<b>Rs.</b>	<b>1153146.00</b>
---------------	------------	-------------------



  
 JV Structural  
 Engineers & Consultants  
 Aurangabad

Name of Work : Proposed Construction of Godown for Storage of Grain for Atulniya Farmers Producer Company Ltd. Waregaon Tq. Phulambri Dist. Aurangabad

## Measurement (B.T.Roads)

Item of Work	Nos.	Length	Breadth	Height	Quantity	
<b>Item No.1</b>						
Construction of <b>granular sub-base</b> by providing close graded material, spreading in uniform layers with motor grader / Paver on prepared surface, mixing by mix in place method with rotavator at OMC, and compacting with vibratory roller to achieve the desired density, complete as per clause 401 -- By Mix in Place Method and Grading - I Material DSR I.No.3.04 P.No.23						
For Internal Road	1	140.00	9.30	0.150	195.30	
					<b>195.30</b>	<b>Cum</b>
<b>Item No.2</b>						
Providing, laying, spreading and compacting stone aggregates of specific sizes to water bound macadam specification including spreading in uniform thickness, hand packing to proper grade and camber, applying and brooming requisite type of screening/ binding Materials to fillup the interstices of coarse aggregate, watering and compacting with Intelligent Compactor with compaction analyzer and V-Sat attachment. to the required density. <b>Grading II</b> (Using Screening Type B (11.2 mm) Aggregate) SSR I.No.3.20 P.No.25						
For Internal Road-Below base	1	140.00	9.15	0.075	96.08	
					<b>96.08</b>	<b>Cum</b>
<b>Item No.3</b>						
Providing and constructing 75 mm. thick Modified Penetration Macadam (MPM) road surface including all materials, preparing the existing road surface, spreading 40 mm. stone metal layers 30% crusher broken metal + 70% Hand broken (by breaking rubble obtained by blasting) heating and spraying the bitumen of specified grade @ 2 Kg/sqm, spreading 12 mm.size chips compacting with three wheel static roller having weight 8 to 10 MT. to achive the desired degree of compaction as per Technical Specification Clause 506 etc. complete. Including picking of existing WBM surface. (VG-30 bulk bitumen rates are considered to arrive at rates) Spec No. IRC-SP-20, 2002 Clause No. 8.7.3. SSR I.No.3.35a P.No.35						
For Internal Road	1	140.00	9.00	0.075	94.50	
					<b>94.50</b>	<b>Sqm</b>

**Item No.4**

Open Graded Premix Surfacing- Providing and Laying OGC 20 mm thickness composed of 13.2 mm to 5.6 mm aggregates premixed with bituminous binder transported to site with VTS , laid over a previously prepared surface, finished to the required grade, level, alignment, and rolling to achieve the desired compaction but excluding prime / tack and Seal coat. For Bitumen of specified grade--USING drum mix type hot mix plant with SCADA, Paver and Vibratory roller ( Over MPM Surface) (VG-30 bulk bitumen rates are considered to arrive at rates) MORTH 511 SSR I.No.4.12 P.No.43

For Internal Road	1	140.00	9.00	-	1260.00
					<b>1260.00 Sqm</b>

**Item No.5**

Providing and applying tack coat on the prepared surface heating by fames in Boiler and spraying bitumen with sprayer on Dry / Hungry B.T. surface 3 kg/10 sqm. (VG-30 bulk bitumen rates are considered to arrive at rates) SSR I.No.3.31 P.No.34


For Internal Road	1	140.00	9.00	-	1260.00
					<b>1260.00 Sqm</b>

**Item No.6**

Providing and laying of Type - B premix seal coat with HMP of appropriate crushed stone chipping 6.70 mm size and penetration bitumen of specified grade @ 0.68 Kg Sqm. , preparing existing road surface including mixing in suitable Batch Mix plant and rolling by static roller having weight 8 to 10 MT. etc. complete. (VG-30 bulk bitumen rates are considered to arrive at rates) MORTH 513 SSR I.No.4.03 P.No.41

For Internal Road	1	140.00	9.00	-	1260.00
					<b>1260.00 Sqm</b>



  
 JV Structural  
 Engineers & Consultants  
 Aurangabad

Name of Work : Proposed Construction of Godown for Storage of Grain for Atulniya Farmers Producer Company Ltd. Waregaon Tq. Phulambri Dist. Aurangabad

### Rate Analysis (B.T.Roads)

#### Item No.1

Construction of granular sub-base by providing close graded material, spreading in uniform layers with motor grader / Paver on prepared surface, mixing by mix in place method with rotavator at OMC, and compacting with vibratory roller to achieve the desired density, complete as per clause 401 -- By Mix in Place Method and Grading - I Material. Morth 401. SSR I.No.3.04 P.No.30

Basic Rate as per SSR 2022-23			Rs:	1804.00
Add L.C. For 20 mm metal	0.640	441.82	Rs:	282.76
Add L.C. For 12/10 mm metal	0.640	441.82	Rs:	282.76
			Rs:	<u>2369.52 /Cum</u>

#### Item No.2

Providing, laying, spreading and compacting stone aggregates of specific sizes to water bound macadam specification including spreading in uniform thickness, hand packing to proper grade and camber, applying and brooming requisite type of screening/ binding Materials to fill up the interstices of coarse aggregate, watering and compacting with vibratory roller to the required density. By Mechanical Means - Grading II (Using Screening Type B (11.2 mm) Aggregate) Morth 404 SSR I.No.3.20 P.No.33

Basic Rate as per SSR 2022-23			Rs:	2192.00
Add L.C. For 60mm metal	1.21	423.41	Rs:	512.33
Add L.C. For Hard Murum	0.24	219.98	Rs:	52.80
			Rs:	<u>2757.13 /Cum</u>

#### Item No.3

Providing and constructing 75 mm. thick Modified Penetration Macadam (MPM) road surface including all materials, preparing the existing road surface, spreading 40 mm. stone metal layers 30% crusher broken metal + 70% Hand broken (by breaking rubble obtained by blasting) heating and spraying the bitumen of specified grade @ 2 Kg/sqm, spreading 12 mm.size chips compacting with three wheel static roller having weight 8 to 10 MT. to achieve the desired degree of compaction as per Technical Specification Clause 506 etc. complete. Including picking of existing WBM surface. (VG-30 bulk bitumen rates are considered to arrive at rates) Spec No. IRC-SP-20, 2002 Clause No. 8.7.3. SSR I.No.3.35a P.No.35

Basic Rate as per SSR 2022-23			Rs:	280.00
Add L.C. For Hand Broken 40 mm metal	0.063	423.41	Rs:	26.67
Add L.C. For 20 mm metal	0.0225	441.82	Rs:	9.94
Add L.C. For 12/10 mm metal	0.0225	441.82	Rs:	9.94
Add L.C.for Asphalt	0.0200	730.3	Rs:	14.61
			Rs:	<u>341.16 /Sqm</u>

**Item No.4**

Open Graded Premix Surfacing- Providing and Laying OGC 20 mm thickness composed of 13.2 mm to 5.6 mm aggregates premixed with bituminous binder transported to site with VTS , laid over a previously prepared surface, finished to the required grade, level, alignment, and rolling to achieve the desired compaction but excluding prime / tack and Seal coat. For Bitumen of specified grade--USING drum mix type hot mix plant with SCADA, Paver and Vibratory roller ( Over MPM Surface) (VG-30 bulk bitumen rates are considered to arrive at rates) MORTH 511 SSR I.No.4.12 P.No.43

Basic Rate as per SSR 2022-23			Rs:	193.00
Add L.C. For 20 mm metal	0.0090	441.82	Rs:	3.98
Add L.C. For 10 mm metal	0.0090	441.82	Rs:	3.98
Add L.C. For 6 mm metal	0.0090	441.82	Rs:	3.98
Add L.C. For Asphalt	0.00146	730.3	Rs:	1.10
			Rs:	<u>206.04 /Sqm</u>

**Item No.5**

Providing and applying tack coat on the prepared surface heating by fumes in Boiler and spraying bitumen with sprayer on Dry / Hungry B.T. surface 3 kg/10 sqm. (VG-30 bulk bitumen rates are considered to arrive at rates) SSR I.No.3.31 P.No.34

Basic Rate as per SSR 2022-23			Rs:	21.00
Add L.C. For Asphalt	0.030	730.3	Rs:	21.91
			Rs:	<u>42.91 /Sqm</u>

**Item No.6**

Providing and laying of Type - B premix seal coat with HMP of appropriate crushed stone chipping 6.70 mm size and penetration bitumen of specified grade @ 0.68 Kg Sqm. , preparing existing road surface including mixing in suitable Batch Mix plant and rolling by static roller having weight 8 to 10 MT. etc. complete. (VG-30 bulk bitumen rates are considered to arrive at rates) MORTH 513 SSR I.No.4.03 P.No.41

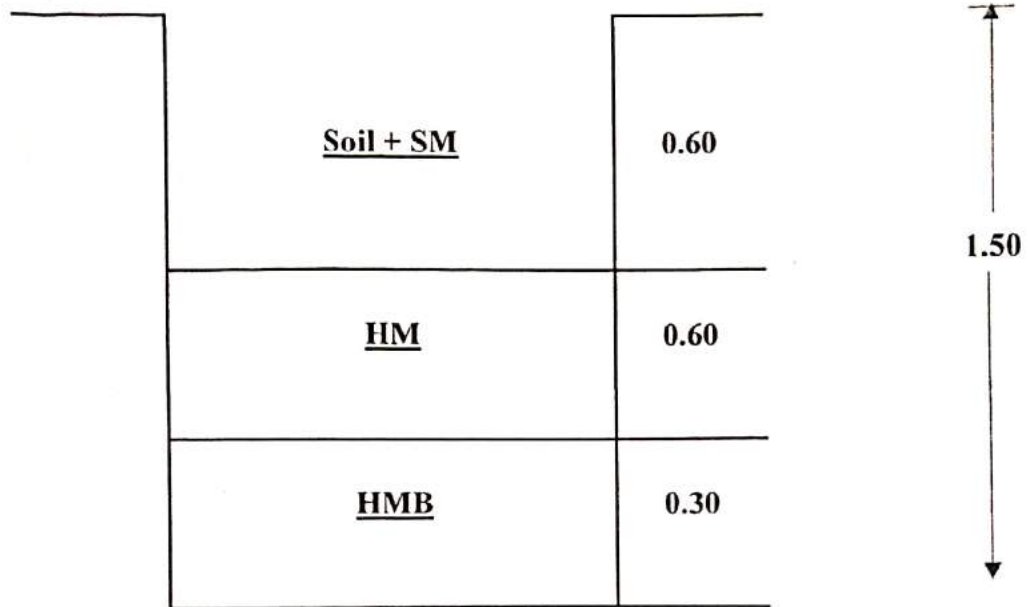
Basic Rate as per SSR 2022-23			Rs:	67.00
Add L.C. For 6 mm metal	0.009	441.82	Rs:	3.98
Add L.C. For Asphalt	0.00098	730.3	Rs:	0.72
			Rs:	<u>71.70 /Sqm</u>




*Handwritten signature*  
JV Structural  
Engineers & Consultants  
Aurangabad

Name of Work :- Proposed Construction of Godown for Storage of Grain for Atulniya Farmers Producer Company Ltd. Waregaon Tq. Phulambri Dist. Aurangabad

TRIAL PIT FOR FOUNDATION

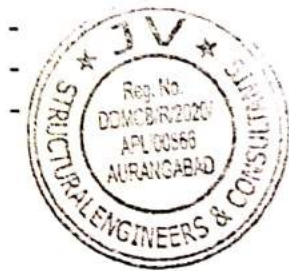


  
JV Structural  
Engineers & Consultants  
Aurangabad

**Name of Work :- Proposed Construction of Godown for Storage of Grain for Atulniya Farmers Producer Company Ltd. Waregaon Tq. Phulambri Dist. Aurangabad**

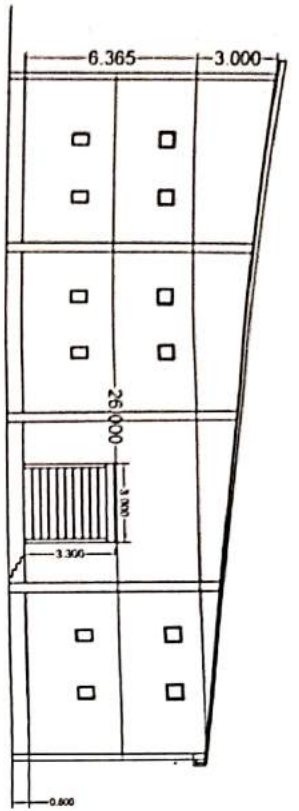
**LEAD CHART**

Sr.No.	Material	Total Lead in km	Pay Load Factor	Rate per Trip	Net Lead Charges/Trip	Remarks
1	Stone/Rubble	17.00	4.70	2540.48	540.53	Sawangi Quarry
2	60 mm & 40 mm metal	17.00	6.00	2540.48	423.41	Sawangi Quarry
3	Metal Below 40 mm	17.00	5.75	2540.48	441.82	Sawangi Quarry
4	Conventional Bricks	22.00	3.105	3741.72 1 brick	1.210 1205.060	Jatwada
5	Conventional Sand	11.00	5.75	1513.34	263.19	Girija River
6	Murum	3.00	6.00	1319.89	219.98	Phulambri
7	Cement	0.00	10.00	0.00	0.00	Phulambri
8	Steel	0.00	10.00	0.00	0.00	Phulambri
9	Maxphalt	405.00	50.00	36514.76	730.30	730.30

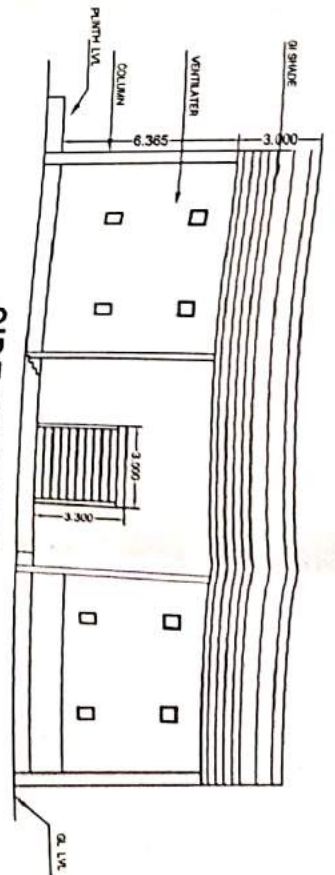


**JV Structural  
Engineers & Consultants  
Aurangabad**

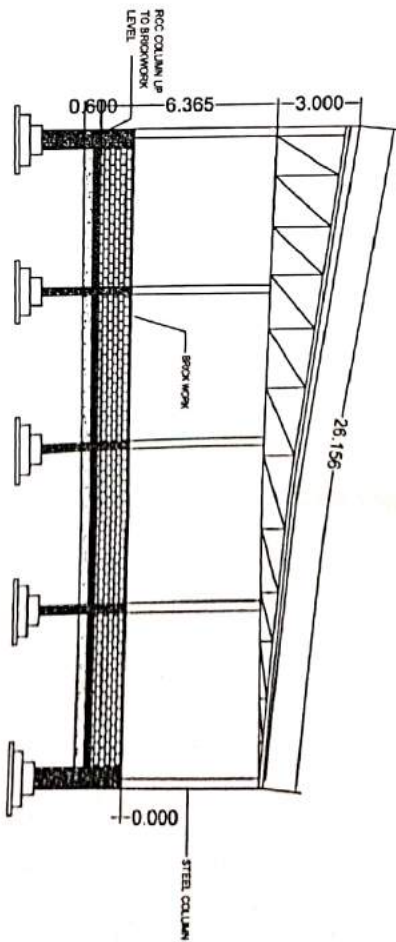
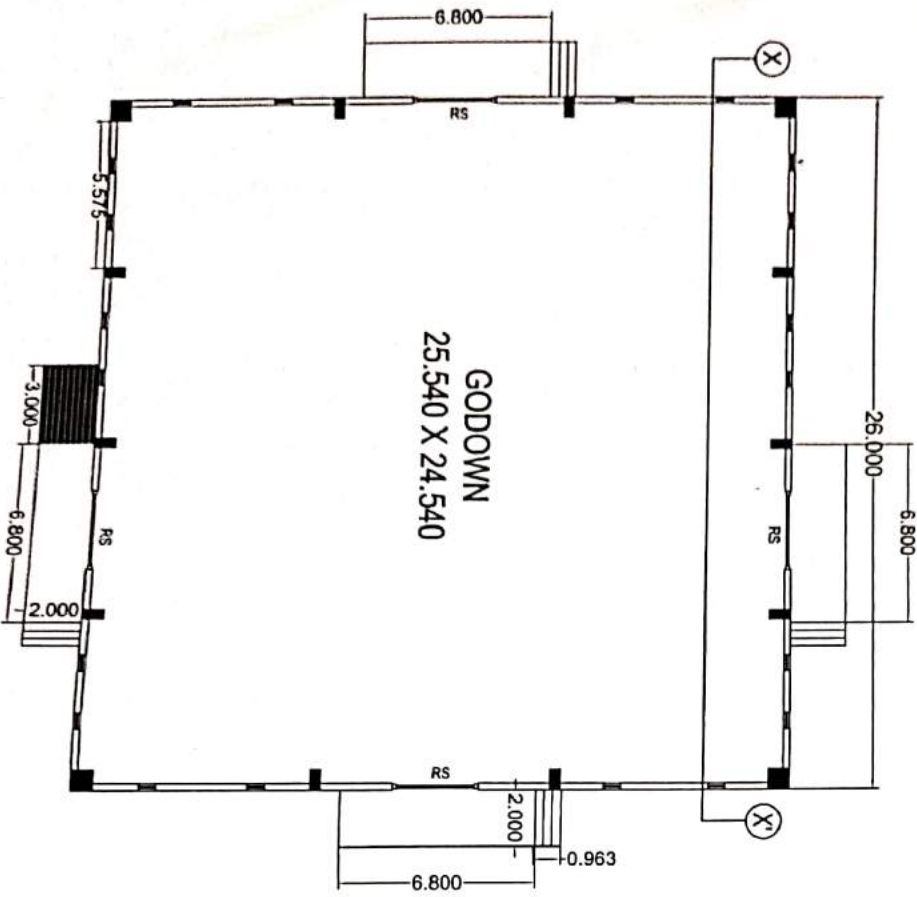




FRONT ELEVATION



SIDE ELEVATION



SECTION X-X



NAME OF WORK : PROPOSED CONSTRUCTION OF GODOWN FOR STORAGE OF GRAIN FOR ATULNIA FARMERS PRODUCER COMPANY LTD. WAREHOUSING TQ. PHULAMIRI DIST. AURANGABAD

CONSULTANT

**JV** Structural Engineers & Consultants



OFFICE :- Post 3111, P. Opp Patel Junior College, Hussain Nagar, Beed By Pals Aurangabad.  
Mobile : 94230255651, 9673071706  
Email : jvstructural@rediffmail.com

SCHEDULE OF OPENING

V - 06 X 06

V1 - 045 X 0.6



TOTAL CAPACITY = 9 x 118 = 1062 M.T.

NAME OF WORK : PROPOSED CONSTRUCTION OF GODOWN FOR STORAGE OF GRAIN FOR A TULNAYA FARMERS PRODUCER COMPANY LTD. WAREGAON TO, PHULAMBERDIST. AURANGABAD

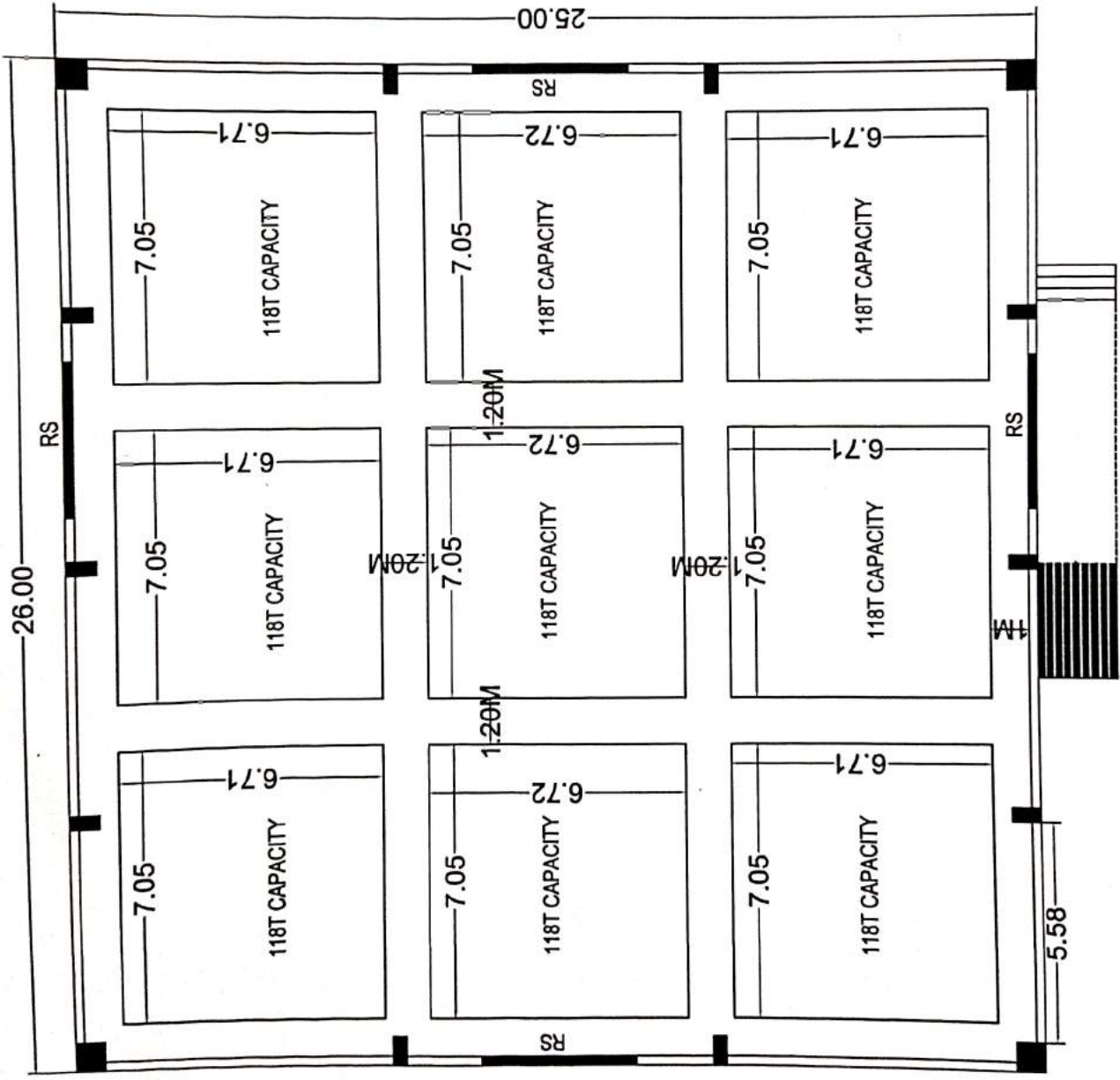
CONSULTANT



**J.V. Structural Engineers & Consultants**

OFFICE :- Plot 311/P, Opp Patel Junior College, Hussain Nagar, Beed By Pass, Aurangabad.  
 Mobile : 942023563, 9673071706  
 Email : jvstructural@gmail.com

EMPANELMENT ON PWD REGION AURANGABAD AS A STRUCTURAL DESIGNERS VIDE C.E. LTR NO. CEAD-7/623 OF DT-31-08-2019



STACK PLAN

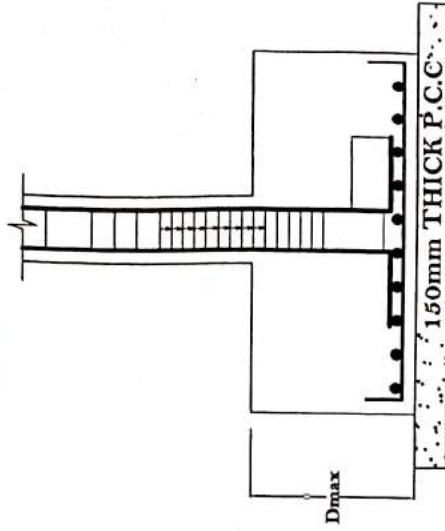


SCHEDULE OF COLUMNS (LOADS CONSIDERED FOR

COLUMN NUMBERS	GROUP NO 1	GROUP NO 2	GROUP NO 3
	C1,C5,C10,C14	C2,C3,C4,C11,C12,C13	C6,C7,C8,C9
FOOTING TO TERRACE SLAB	750 X 750	750 X 350	750 X 350

SCHEDULE OF BOX FOOTINGS (SBC CONSIDERED FOR =150KN/SQM)

GROUP NUMBERS	GROUP NO 1	GROUP NO 2	GROUP NO 3
COLUMN NUMBERS	C1,C5,C10,C14	C2,C3,C4,C11,C12,C13	C6,C8,C7,C9
DEPTH OF FOOTING	400	600	400
SIZE OF FOOTING (B X L)	1350 X 1350	2200 X 2600	1450 X 1850
SIZE OF P.C.C	1650 X 1650	2500 X 2900	1750 X 2150



TYPICAL BOX FOOTING SECTION

DETAILS OF COLUMN FOOTING SCHEDULE

NAME OF WORK - PROPOSED CONSTRUCTION OF GODOWN FOR STORAGE OF GRAIN FOR ATU LUNIYA FARMERS PRODUCER COMPANY LTD. WAREGAON TQ. PHULANBRI DIST. AURANGABAD

STRUCTURAL DESIGN BY



**JV Structural Engineers & Consultants**

OFFICE :- Plot 311, P. Opp Patel Junior College,  
Hussain Nagar, Beed By Pass Aurangabad.  
Mobile : 9423028563, 9673071706  
Email : jvstructural@rediffmail.com

EMPANELMENT ON PWD REGION AURANGABAD AS A STRUCTURAL DESIGNERS YDP/CE/ETR NO. CE/AD-7465/01-DF-21-08-2019

FOR ESTIMATE PURPOSE ONLY 2



**GL/PLINTH LEVEL RCC STRUCTURAL PLAN**

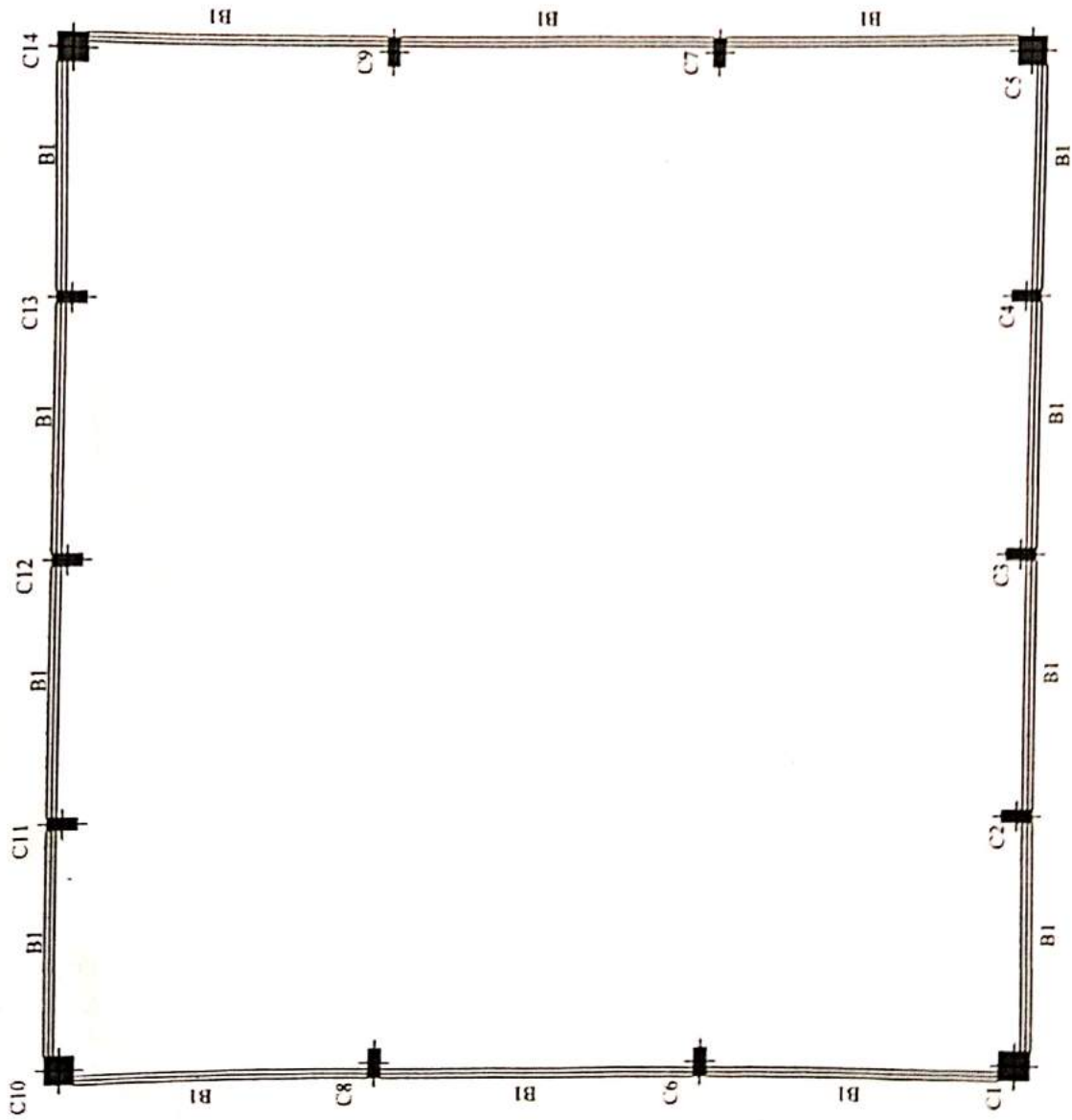
NAME OF WORK - PROPOSED CONSTRUCTION OF GODOWN FOR STORAGE OF GRAIN FOR A TULSI & FARMERS PRODUCE COMPANY LTD WAREHOUS TO PHULAMBRI DIST. AURANGABAD

STRUCTURAL DESIGN BY 

**JV Structural Engineers & Consultants**

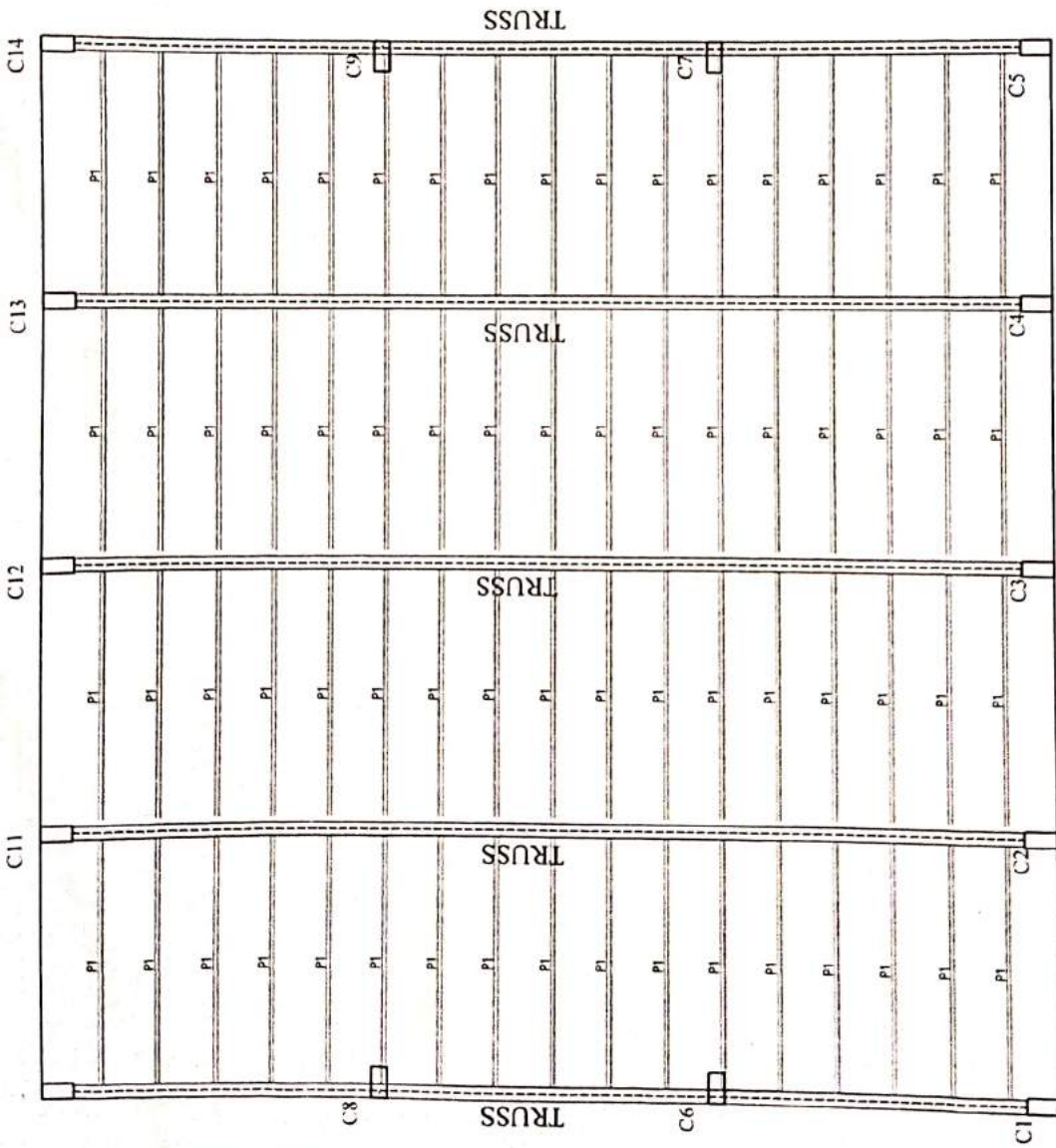
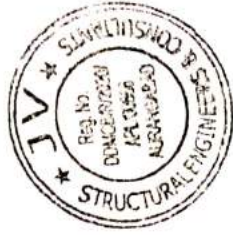
OFFICE - Plot 511 Popp Patel Junior College, Hussain Nagar, Beed By Post Aurangabad  
 Mobile 9423028863, 9875071706  
 Email jvstructural@rediffmail.com

ESAPANELMENTON PWD REGION, AURANGABAD AS A STRUCTURAL DESIGNER UNDER C.E. ITR NO. CT.A.D. 7, 462306 (01.2.08.2019)



PLINTH LEVEL RCC STRUCTURAL PLAN

BEAMS AT PLINTH LEVEL PLAN  
B1  
- 230 X 600



TRUSS BOTTOM LEVEL RCC STRUCTURAL PLAN

TRUSS BOTTOM LEVEL RCC STRUCTURAL PLAN

NAME OF WORK : PROPOSED CONSTRUCTION OF GODOWN FOR STORAGE OF GRAIN FOR ATUL NIYA FARMERS PRODUCER COMPANY LTD. WAREHOUS TO PHULAMBRI DIST. ARAKANGABAD

STRUCTURAL DESIGN BY



JV Structural Engineers & Consultants

OFFICE -Plot 311 P Opp Patel Junior College, Hussain Nagar, Beed By, Pass Aarakangabad.

Mobile : 9423028563, 9675071706

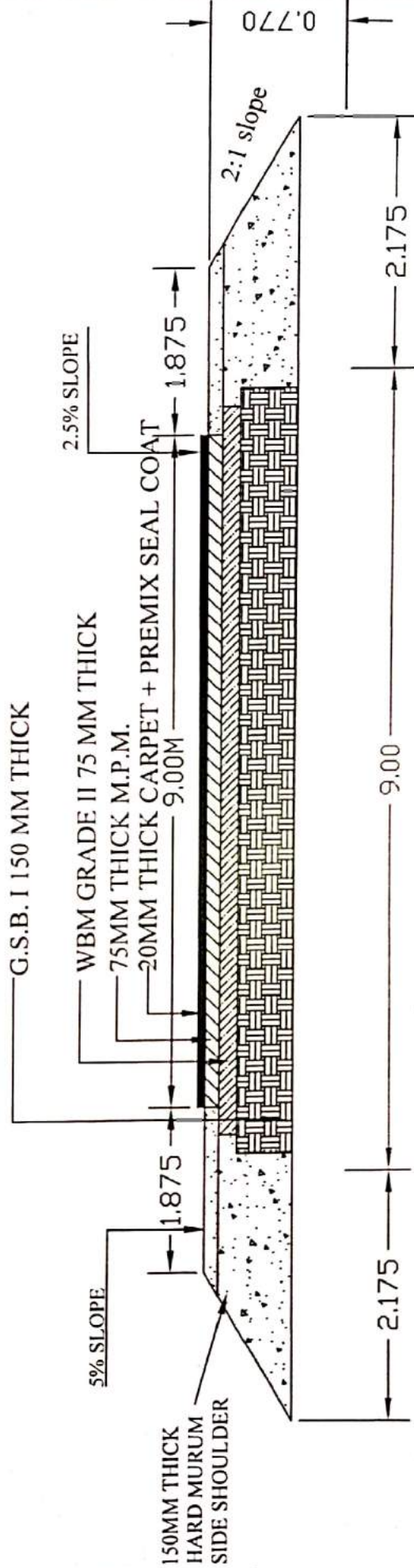
Email : jvstructural@gmail.com

EMPANELMENT ON PWD REGION: ARAKANGABAD AS 3 STRUCTURAL DESIGNER'S VIDE C.E. TR. NO. CEAD/2002-03/DT/21-08-2019

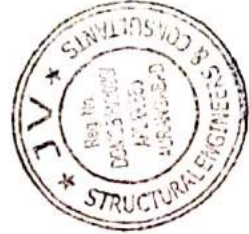


FOR ESTIMATE PURPOSE ONLY.

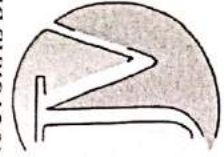
NAME OF WORK :- PROPOSED CONSTRUCTION OF GODOWN FOR STORAGE OF GRAIN FOR  
ATULNIYA FARMER PRODUCER COMPANY LTD. WAREGAON TQ. PHULAMBRI  
DIST. AURANGABAD



Cross Section of B.T. Road



STRUCTURAL DESIGN BY



**JV Structural Engineers & Consultants**

OFFICE :- Plot 31/1/1, Opp Patel Junior College,  
Hussain Nagar, Beed By Pass Aurangabad.

Mobile : 9423028563, 9673071706

Email : [jvstructural@rediffmail.com](mailto:jvstructural@rediffmail.com)

EMPANELMENT ON PWD REGION AURANGABAD AS A STRUCTURAL DESIGNERS VIDE C.E. L.R. 50. CEA D-7-4625 OF DT 31-08-2019



Ref No : IEEPL/Offer HO/22-23/241

Date : 04<sup>th</sup> February 2023

To,  
Atulniya Farmers Producer Company Ltd  
Waregaon, Tq. Phulambri  
Dist . Aurangabad

**Subject** : Estimate for supply & installation of lighting system for Godown of grain storage.

Dear Sir,

With reference to above subject and your enquiry, we are pleased to submit our offer as per price schedule and other details enclosed, subject to following terms and conditions. Please explore through the same and revert for any kind of assistance you might need in context of this subject;

**Commercial Terms and Conditions:**

1.	Price Basis	As per enclosed PRICE SCHEDULE
2.	Address	<ul style="list-style-type: none"><li>• P.O. to be placed on office address: -</li><li>• IDEAS ELECTRICALS &amp; ENGINEERS PVT LTD, Plot. no. 32, Gut no. 44, Near Bajaj Hospital, Uma Gopal Nagar, Beed bypass, Aurangabad, PIN-431005</li><li>• GST- 27AAFCl1160D1Z0</li></ul>
3.	Taxes & Duties	<ul style="list-style-type: none"><li>• Shall be extra as applicable at the rates prevailing at the time of dispatch.</li><li>• Present rate is GST@18%.</li></ul>
4.	Terms of Payment	30% advance along with order & balance 70% plus taxes against proforma invoice
5.	Delivery period	Within 03-04 weeks from the date of purchase order and receipt of advance payment.
6.	Validity	15 days from the date of offer.
7.	Billing & Dispatch	From IDEAS ELECTRICALS & ENGINEERS PVT. LTD, Aurangabad

Setting Global Standard...

Corp. Office : "IDEAS HOUSE" Plot No. 32, Gut No. 44, Near Bajaj Hospital,  
Uma Gopal Nagar, Beed bypass, Aurangabad - 431010 M.H. India  
Phone : +91 80078 03636, +91 240-2459828, 2453536.  
Visit us at : <http://www.ideasengineers.com>, E mail : [info@ideasengineers.com](mailto:info@ideasengineers.com)



**IDEAS ELECTRICALS &  
ENGINEERS PRIVATE LIMITED**

CIN: U74599MH2018PTC318796  
Formerly known as IDEAS ENGINEERS



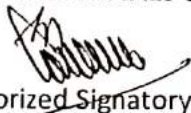
**Force Majure:**

- If any time during the continuance of this contract, the performance, in whole or in part, of any obligation under this contract shall be prevented or delayed at our / our sub suppliers works by reasons by any war (whether declared or otherwise), hostility, acts of the public enemy, civil commotion, sabotage, fires, floods, explosive, earthquake, epidemics, quarantine restrictions, strikes, labour dispute, lockouts, compliance with regulations, orders or instructions of any central, state or municipal government or agencies thereof, inability to obtain material or sufficient electricity for full manufacturing operations, any act of God, then provided notice of the happening of any such eventuality is given by us to the purchaser within a reasonable period of time from the date of eventuality, the suitable extension of delivery time shall be granted by the purchaser.

We believe, this is in-line with your requirement, we look forward your positive response soon on this subject.

Thanking you  
Yours Sincerely

**IDEAS ELECTRICALS & ENGINEERS PVT.LTD.**

  
Authorized Signatory



Setting Global Standard...

Corp. Office : "IDEAS HOUSE" Plot No. 32, Gut No. 44, Near Bajaj Hospital,  
Uma Gopal Nagaj, Bead byepass, Aurangabad - 431010 M.H. India  
Phone : +91 80078 03636, +91 240-2452828, 2453636  
Visit us at : <http://www.ideasengineers.com>, E mail : [info@ideasengineers.com](mailto:info@ideasengineers.com)



**IDEAS ELECTRICALS &  
ENGINEERS PRIVATE LIMITED**

CIN: U71999MH2018PTC318796  
Formerly known as IDEAS ENGINEERS



Ref No : IEEPL/Offer HO/22-23/241

Date : 04<sup>th</sup> February 2023

To,  
**Atulniya Farmers Producer Company Ltd**  
Waregaon, Tq. Phulambri  
Dist . Aurangabad

**Subject** : Estimate for supply & installation of lighting system for Godown of grain storage.

Dear Sir,

With reference to above subject and your enquiry, we are pleased to submit our offer as per price schedule and other details enclosed, subject to following terms and conditions. Please explore through the same and revert for any kind of assistance you might need in context of this subject;

**Commercial Terms and Conditions:**

1.	Price Basis	As per enclosed PRICE SCHEDULE
2.	Address	<ul style="list-style-type: none"><li>• P.O. to be placed on office address: -</li><li>• IDEAS ELECTRICALS &amp; ENGINEERS PVT LTD, Plot. no. 32, Gut no. 44, Near Bajaj Hospital, Uma Gopal Nagar, Beed bypass, Aurangabad, PIN-431005</li><li>• GST- 27AAFCl1160D1Z0</li></ul>
3.	Taxes & Duties	<ul style="list-style-type: none"><li>• Shall be extra as applicable at the rates prevailing at the time of dispatch.</li><li>• Present rate is GST@18%.</li></ul>
	Terms of Payment	30% advance along with order & balance 70% plus taxes against proforma invoice
	Delivery period	Within 03-04 weeks from the date of purchase order and receipt of advance payment.
	Validity	15 days from the date of offer.
	Origin & Dispatch	From IDEAS ELECTRICALS & ENGINEERS PVT. LTD, Aurangabad

Setting Global Standard...

Corp. Office : "IDEAS HOUSE" Plot No. 32, Gut No. 44, Near Bajaj Hospital,  
Uma Gopal Nagar, Beed bypass, Aurangabad - 431010 M.H. India  
Phone : +91 80078 03636, +91 240 2452828, 2453636.  
Visit us at : <http://www.ideasengineers.com>, E mail : [info@ideasengineers.com](mailto:info@ideasengineers.com)



**IDEAS ELECTRICALS & ENGINEERS PRIVATE LIMITED**

CIN: U74999MH2018PTC318796  
Formerly known as IDEAS ENGINEERS



### PRICE SCHEDULE

Sr	Particulars	UOM	Qty	Unit Rate	Amount
1	Supply & Installation of Incomer Panel	No	1	25,500.00	25,500.00
2	Supply & Installation of Double door IP43 type SPN/TPN/VTPN Lighting D.B. with necessary MCB AND RCCB	No	1	10,500.00	10,500.00
3	Supply & Installation of LED Light fittings 25 Watt with mounting arrangement	No	30	2,550.00	76,500.00
4	Supplying and Laying of Armoured LT Cables - XLPE - FR - 1100V - Cabling in saddled to wall, through pipe and wiring suitable Aluminium tags 4 C X 25 sq mm Al. armoured XLPE	Mtr	100	215.00	21,500.00
	Supplying and laying of copper Flexible cable LT Cables - FR - 1100V - Cabling in saddled to wall through pipe and wiring suitable Aluminium tags 4C x 2.5 Sq.mm copper Flexible cable	Mtr	200	130.00	26,000.00
	Supply & Installation of Termination material	Lot	1	12,500.00	12,500.00
	Supply & Installation of 250W LED Floodlight Luminaire, suitable for Wall / Column Mounting	No	4	8,500.00	34,000.00
<b>Total Amount</b>					<b>206,500.00</b>



*[Handwritten Signature]*

Corp. Office : "IDEAS HOUSE" Plot No. 32, Gut No. 44, Near Bajaj Hospital,  
Uma Gopal Nagar, Beed byepass, Aurangabad - 431010 M.H. India  
Phone : +91 80078 03636, +91 240-2452829, 2453636  
Visit us at : <http://www.ideasengineers.com>, E mail : [info@ideasengineers.com](mailto:info@ideasengineers.com)



**Setting Global Standard...**  
**IDEAS ELECTRICALS &  
ENGINEERS PRIVATE LIMITED**

CIN: U74999MH2018PTC318796  
Formerly known as IDEAS ENGINEERS